



UNIVERSITY  
of HAWAII®  
MĀNOA

# KLM Update

Thursday 7/30/2015

Isar Mostafanezhad



# KLM update: HW

7/30/2015

- All modules are in assembly and should be in Honolulu in two weeks.



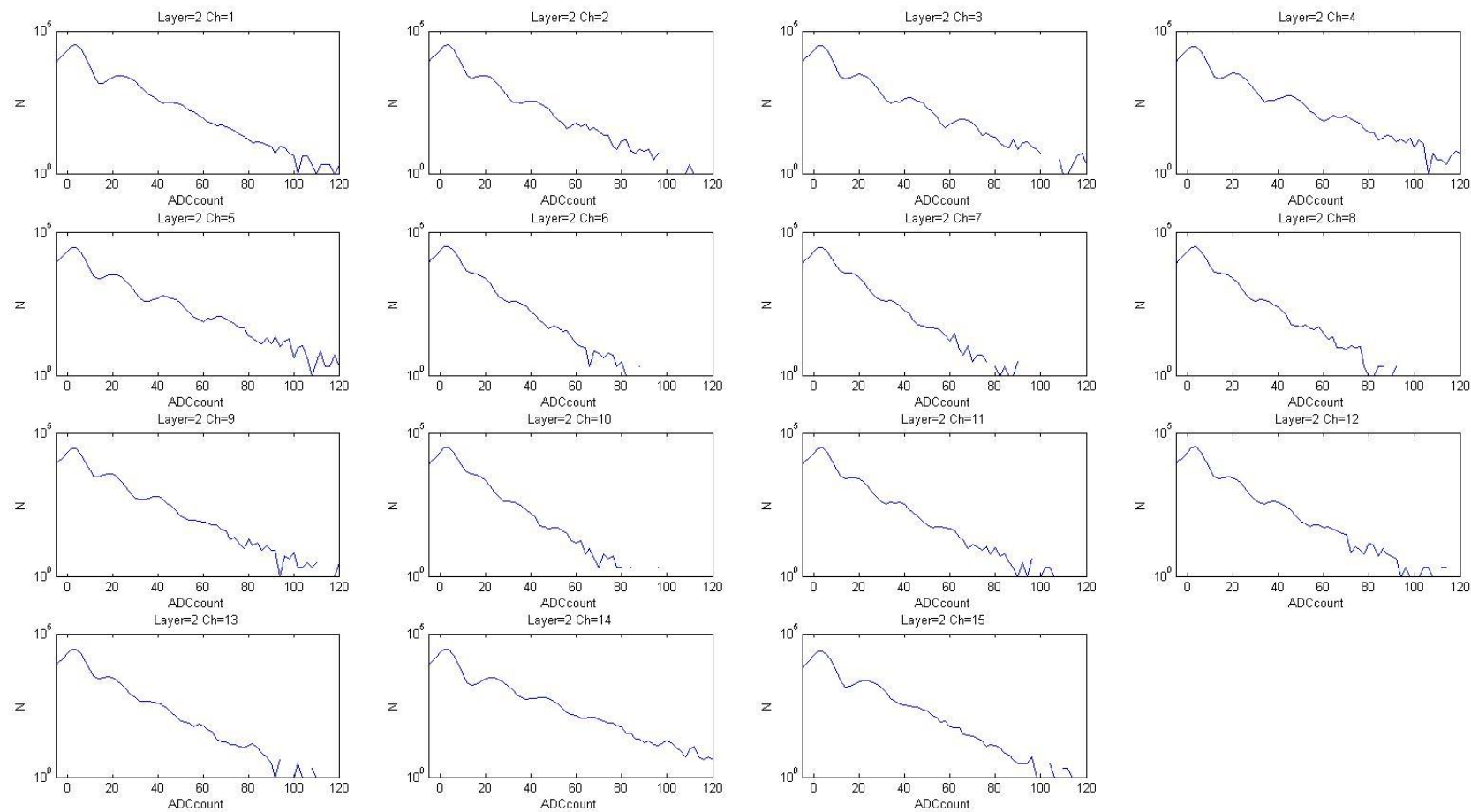
UNIVERSITY  
of HAWAII®  
MĀNOA



# KLM update: CRT

7/30/2015

Peak value distribution from  
Data acquired using random  
triggers  
V=71.5V



## KLM update: CRT

7/30/2015

- Gathered some data from two almost facing scintillator sectors: BF2 and BF7, which correspond to HSLB a and HSLB d on the COPPER.
- Data acquisition would stall due to an error thrown by the COPPER complaining about the event numbers from the two HSLBs being the same.
- Asked Dmitri to add more JTAGs for remote debug

