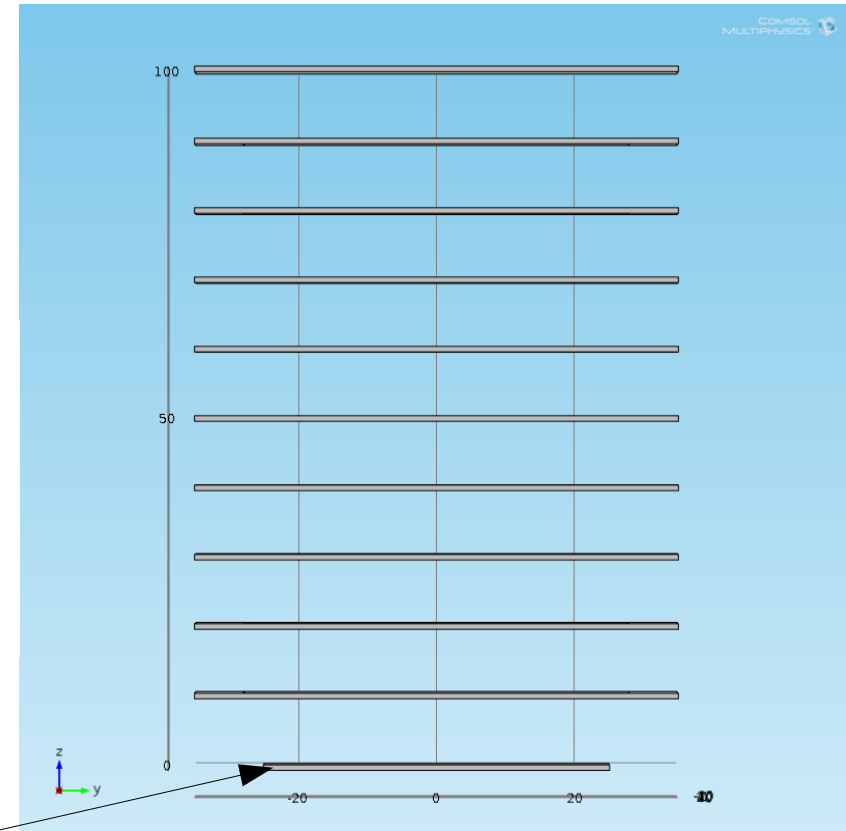
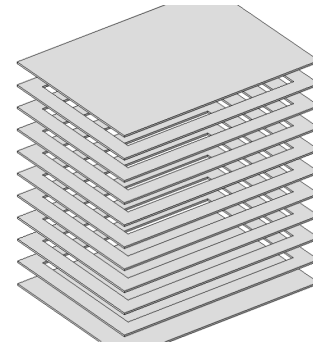
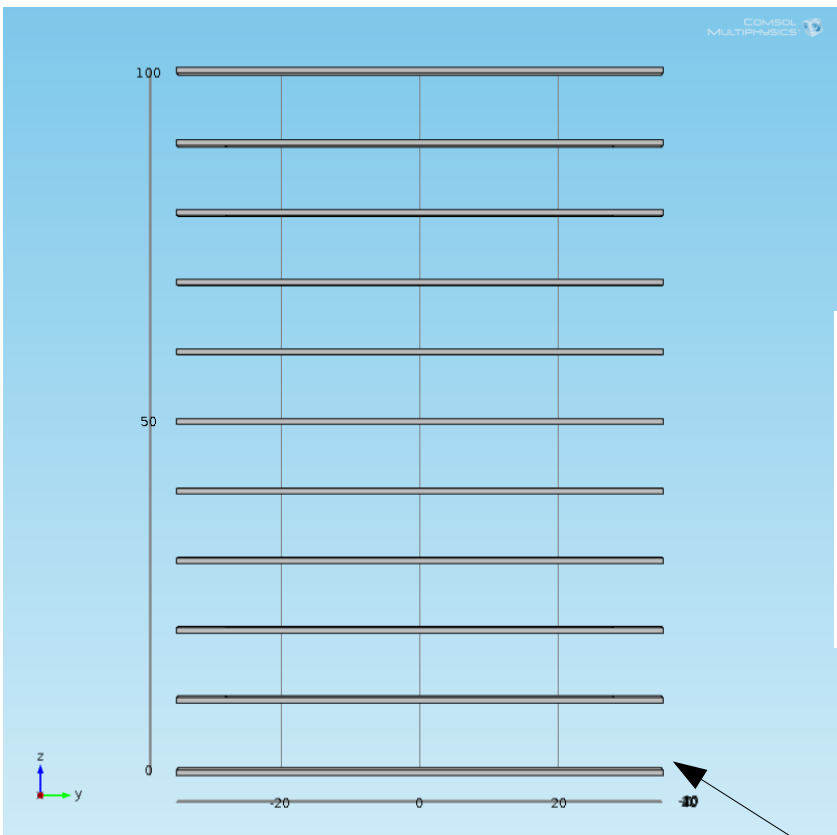


Simplified field cage

Vessel included but not represented, ring spacing 1cm

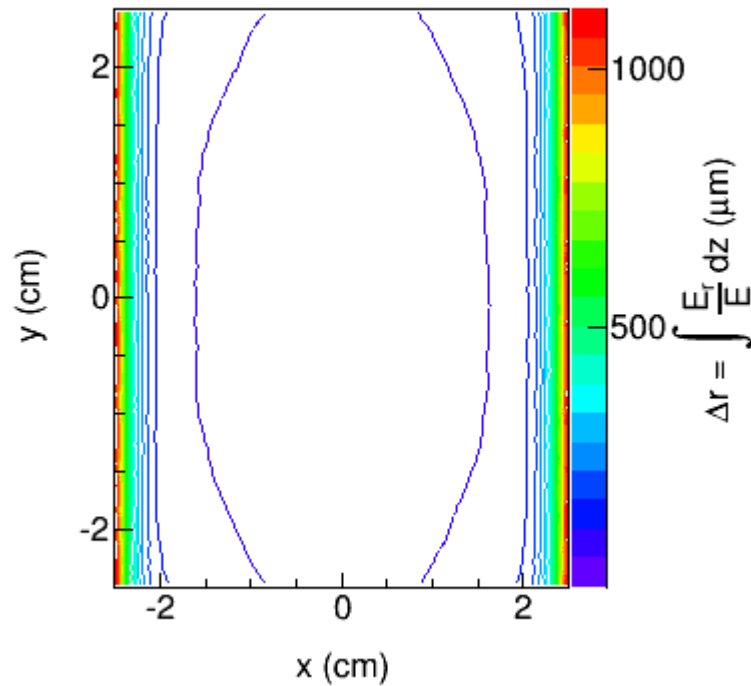


● Full anode

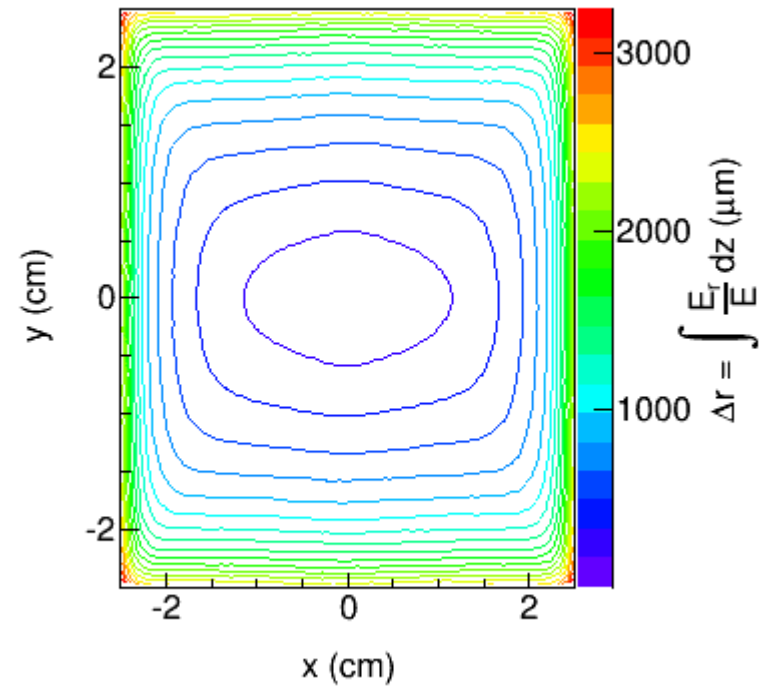
GND

● 5 x 5 cm² anode

2D radial displacement

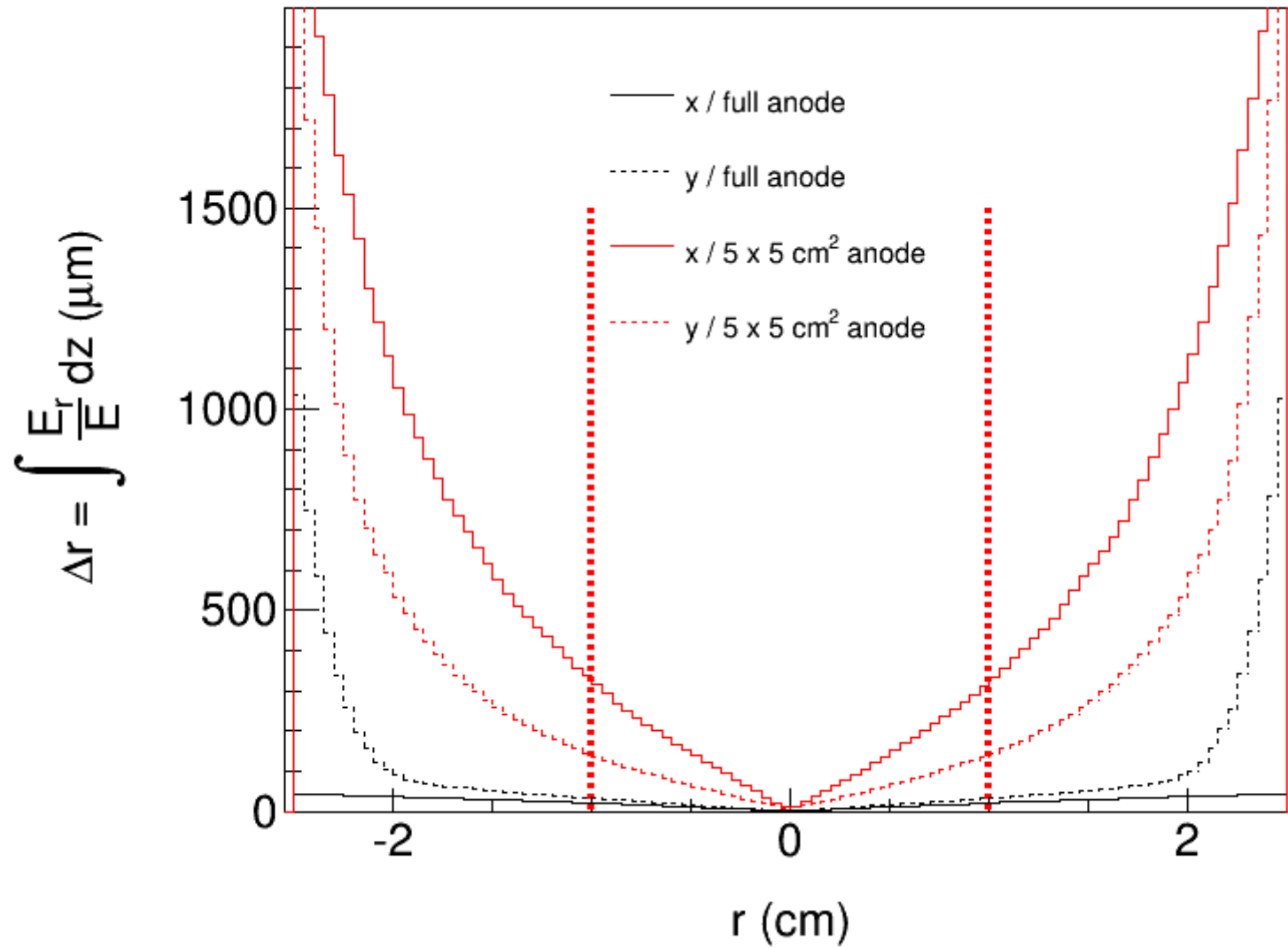


- Full anode

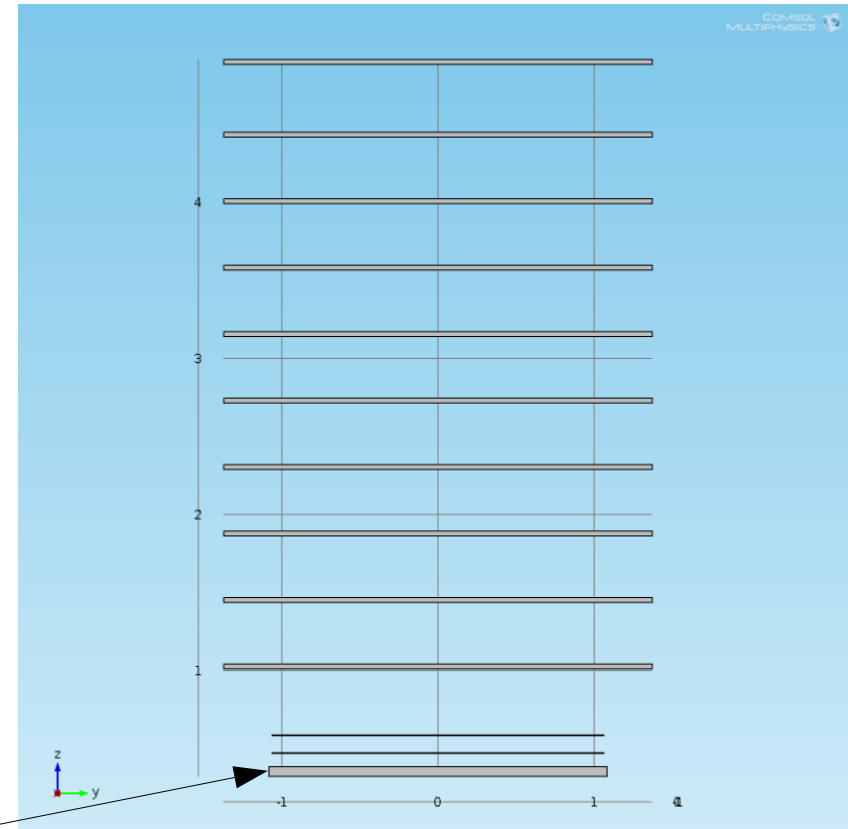
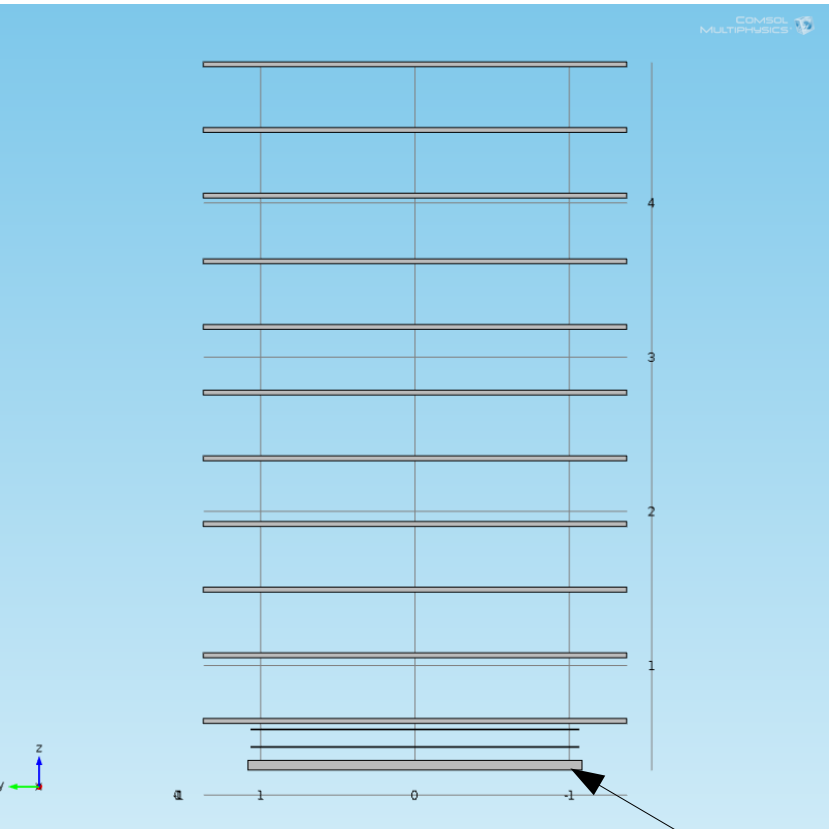


- 5 x 5 cm² anode

1D radial displacement



Complete field cage

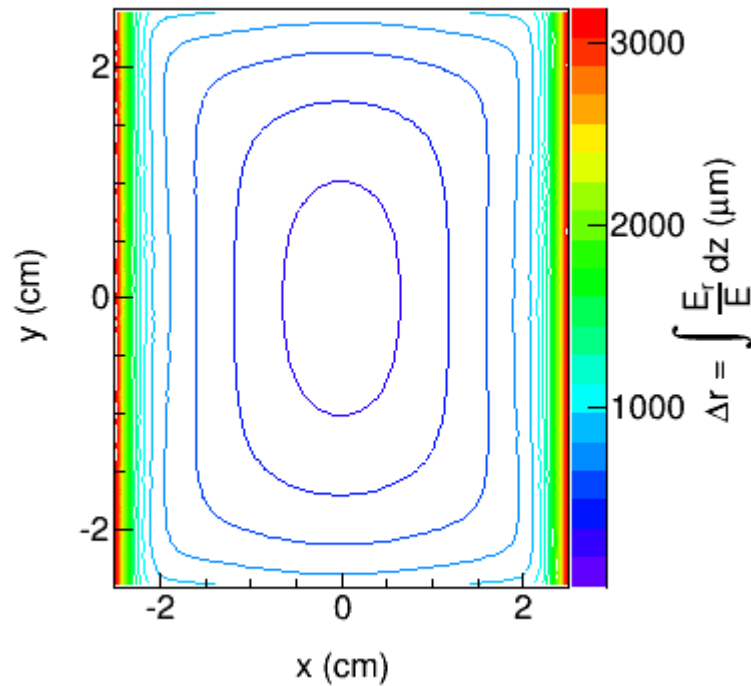


• Complete

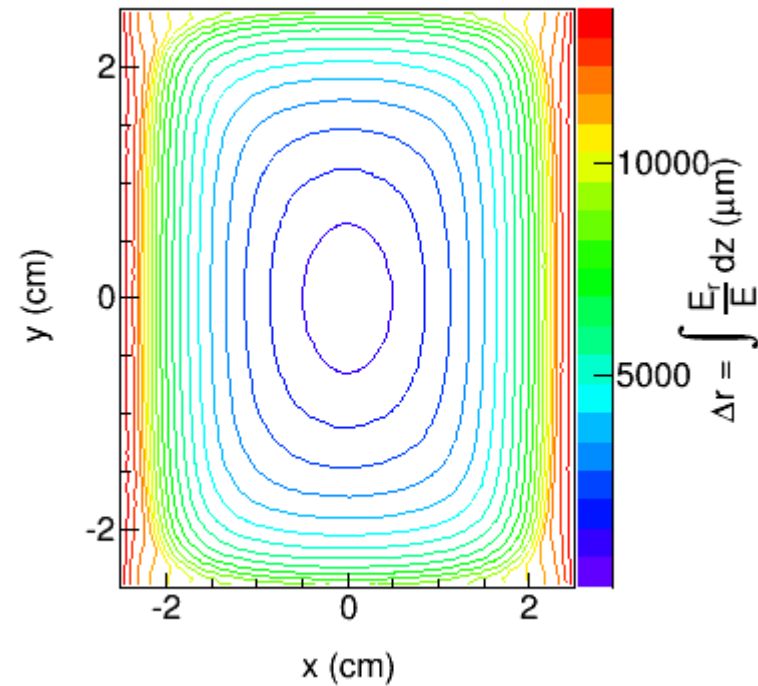
GND

• Complete w/o anode

2D radial displacement

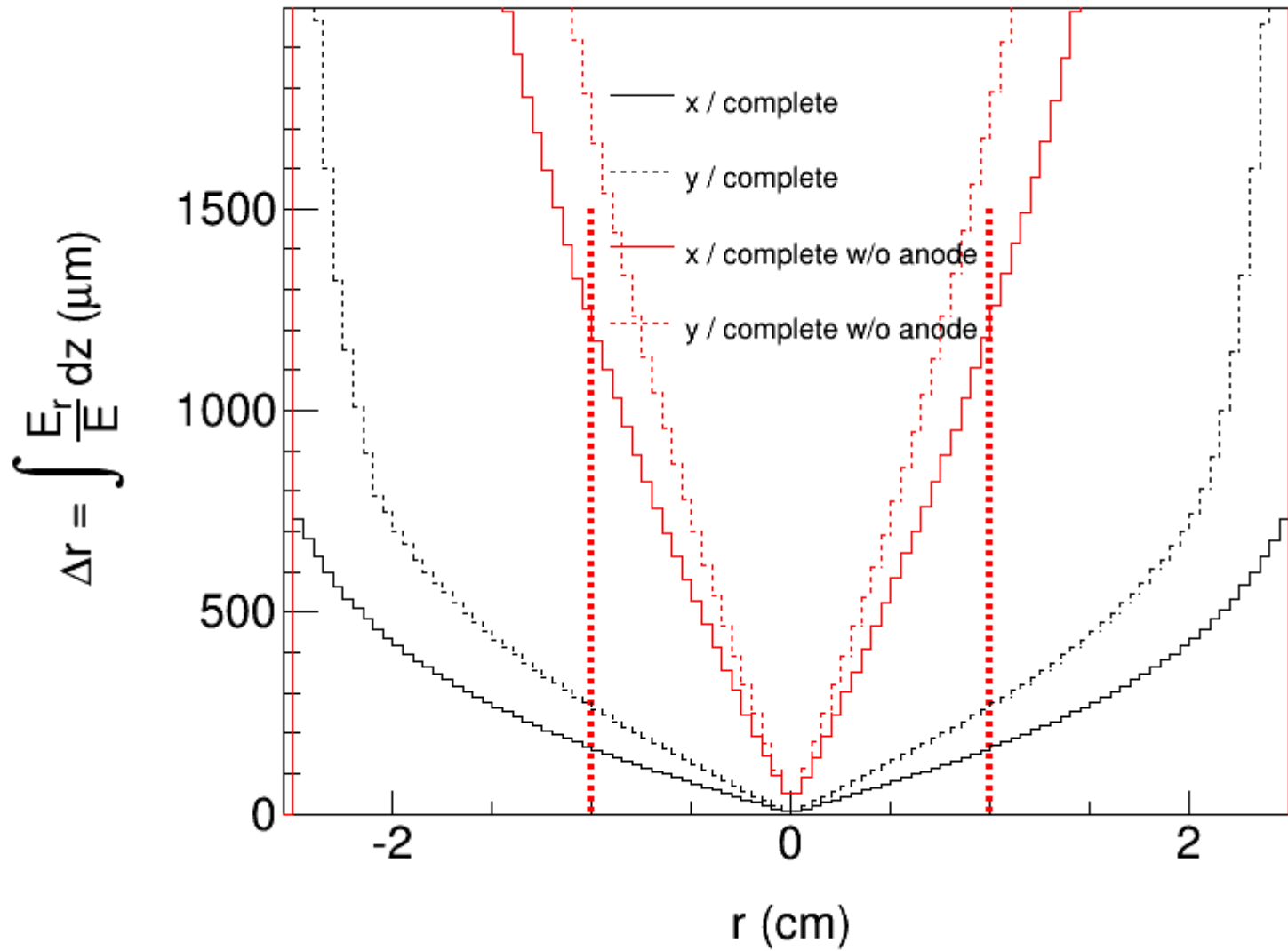


- Complete



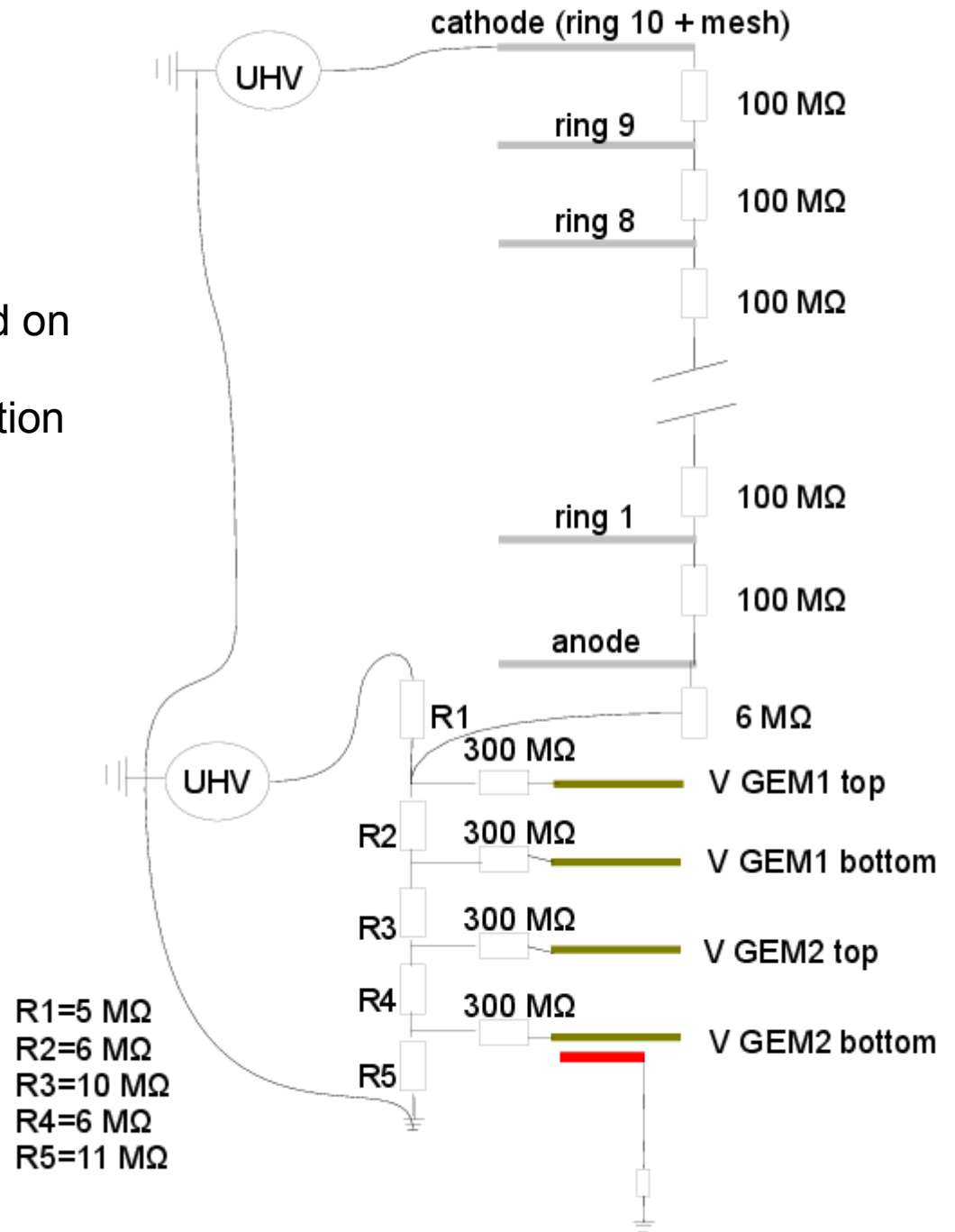
- Complete w/o anode

1D radial displacement

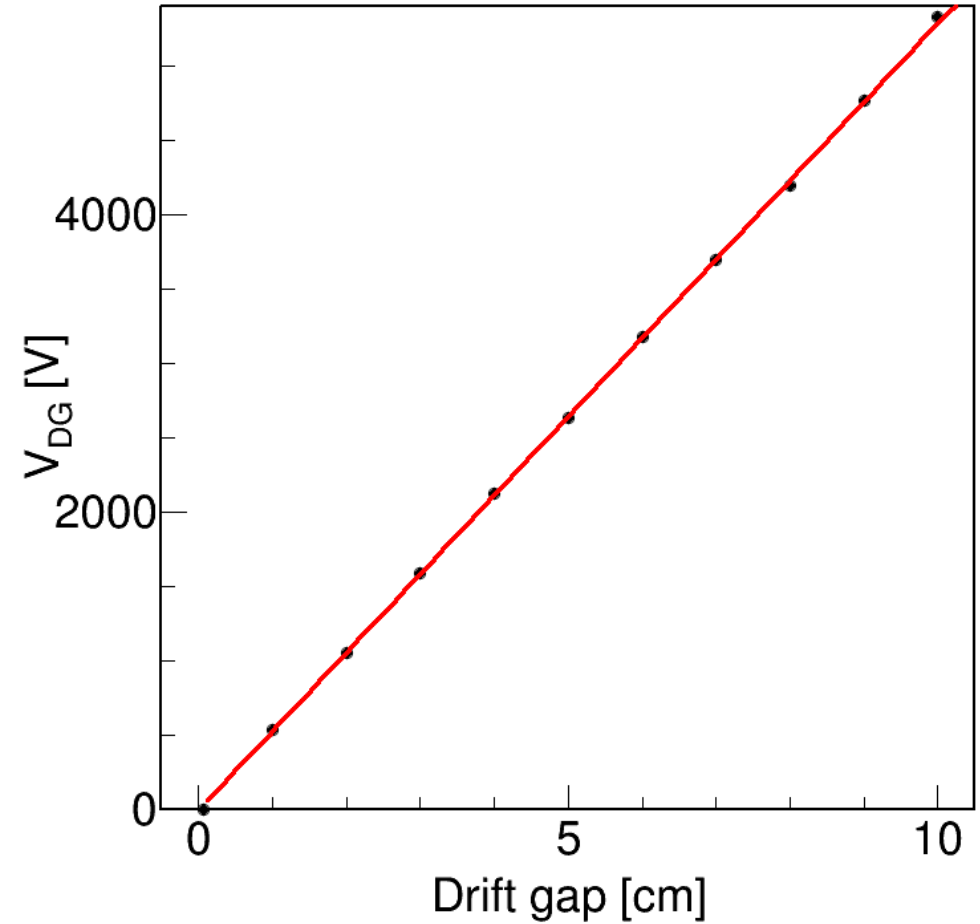
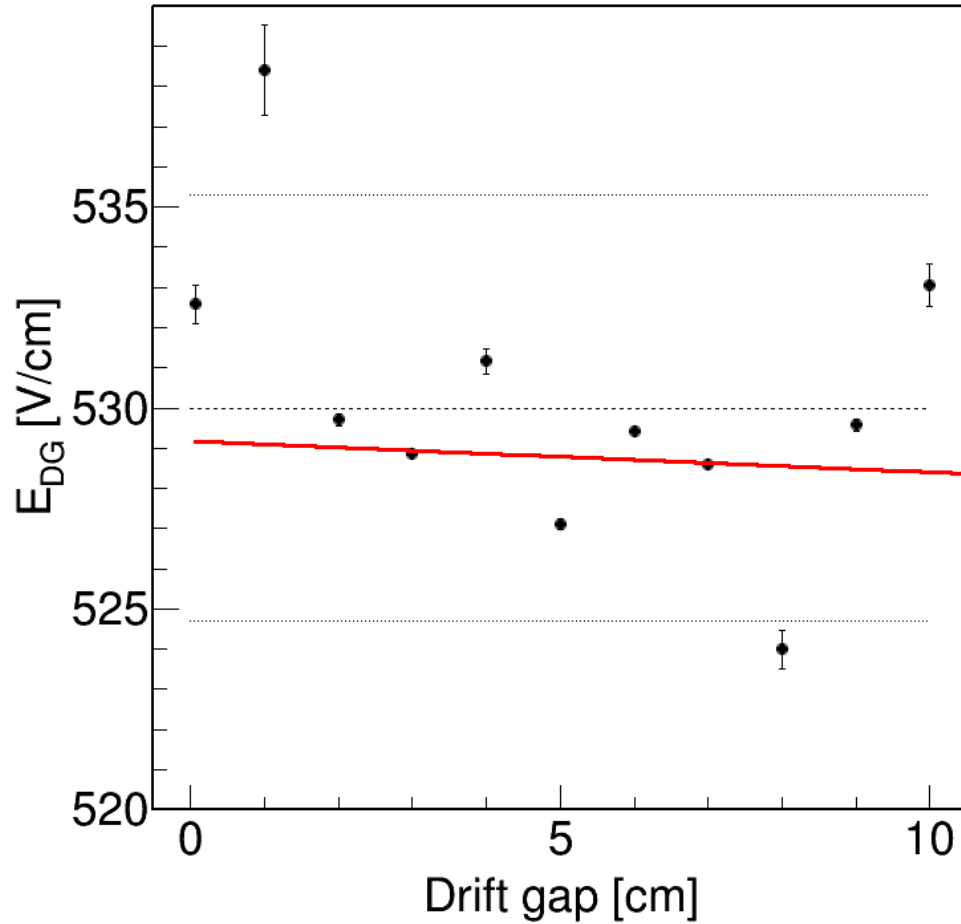


Resistor chain & HV divider

- Based on the resistance values measured on the FC and in the box
- Electric field and potential dropped estimation
- Box behavior

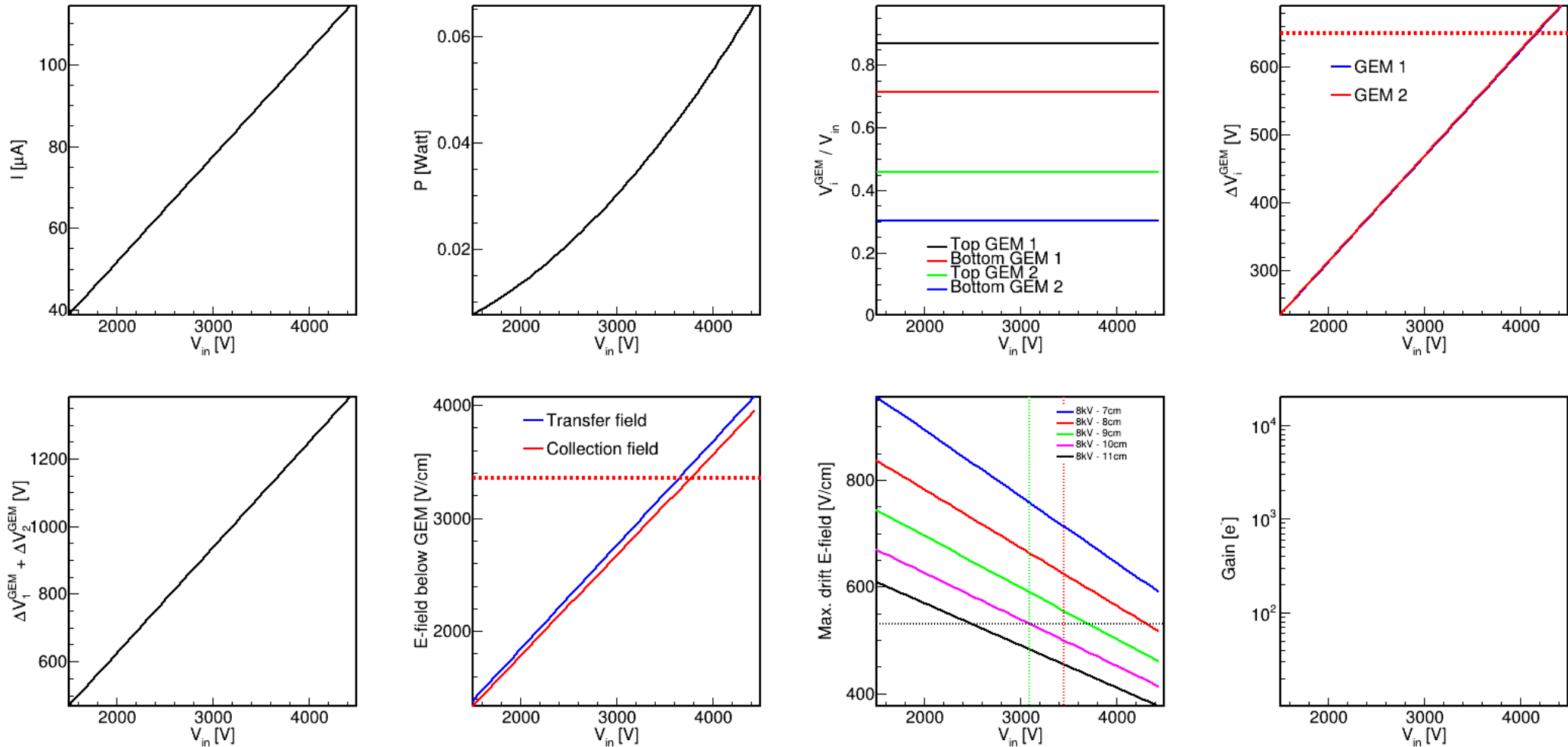


Efield and V behavior prediction

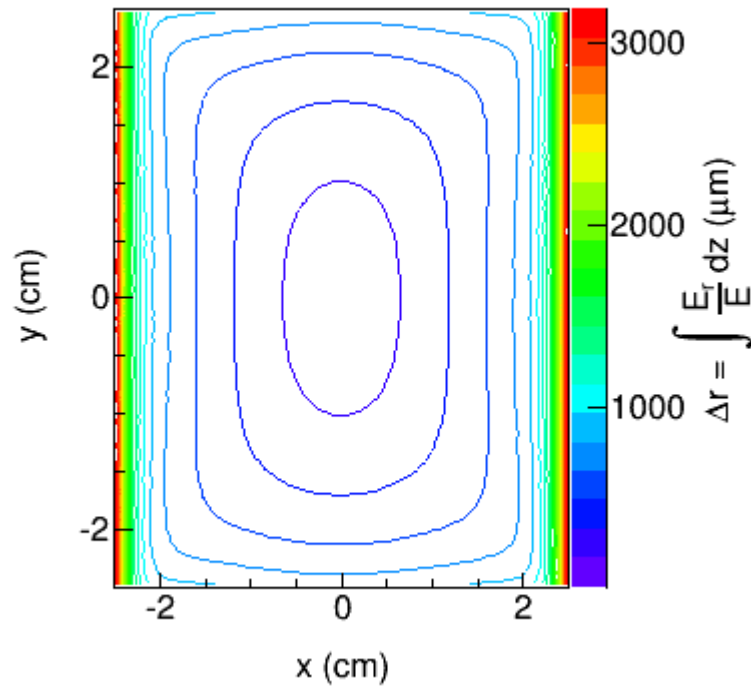


Error bar = measurement variance

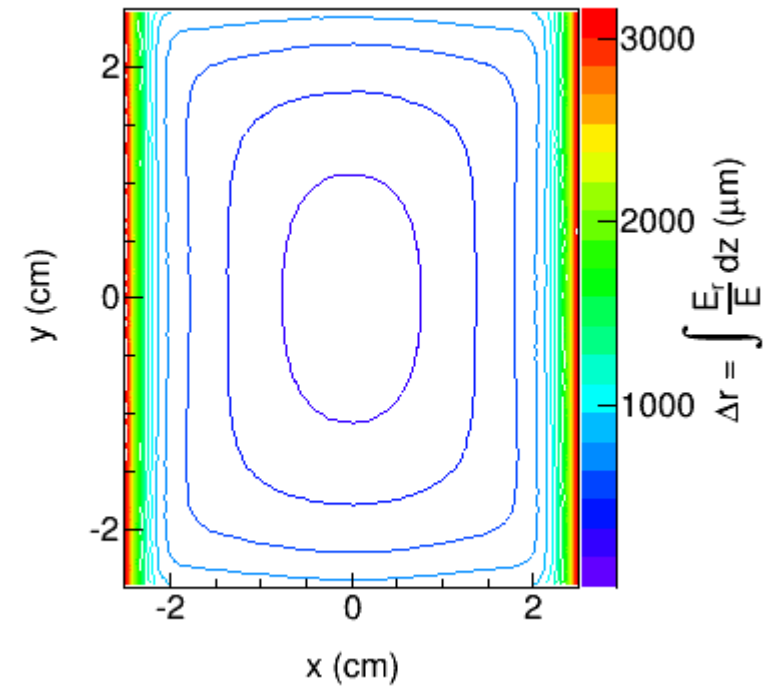
Box behavior prediction



Effect on Δr

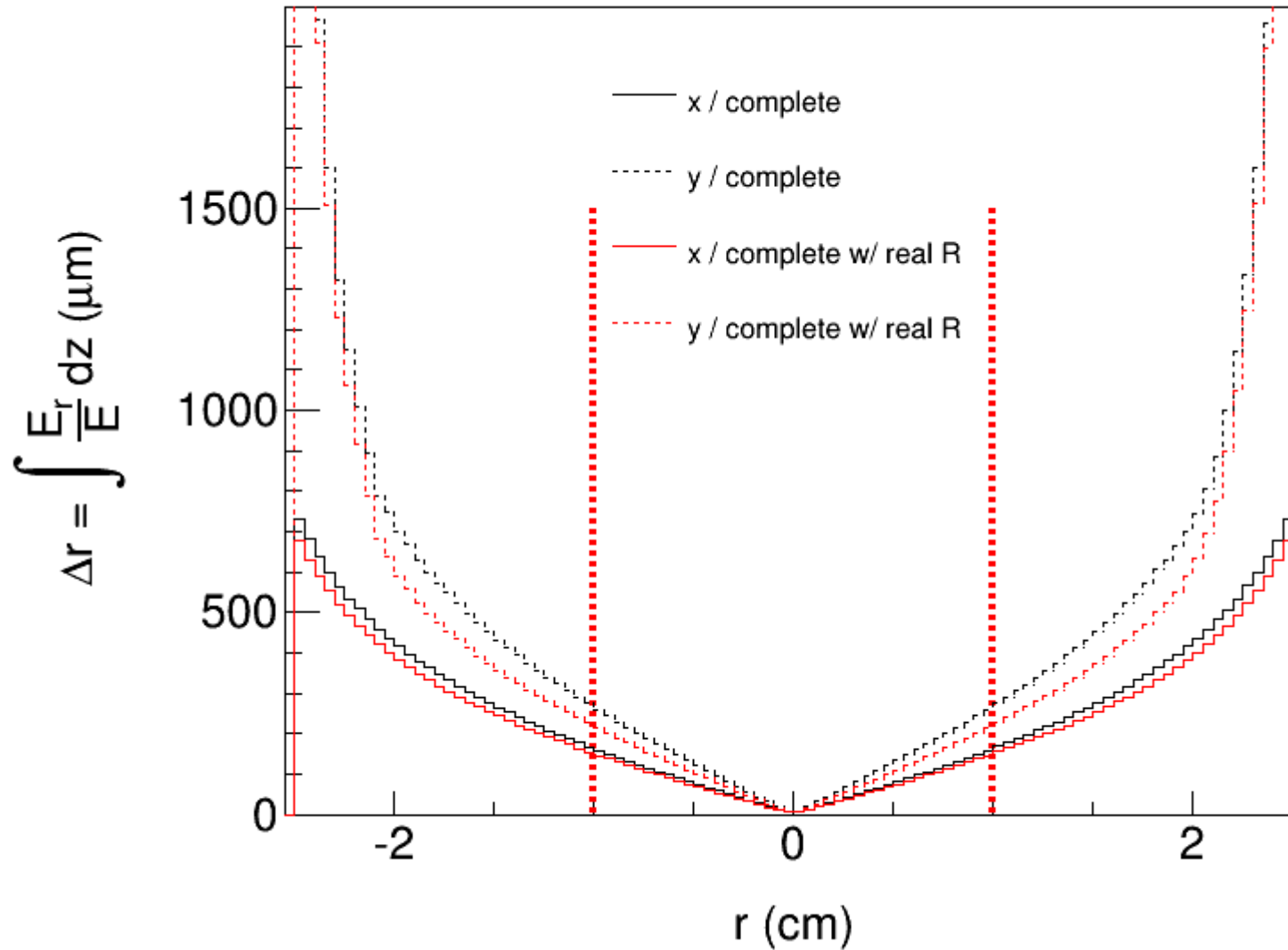


- Complete



- Complete with real R

Effect on Δr



Conclusion

- Anode is needed
- Resistance with 1% tolerance enough