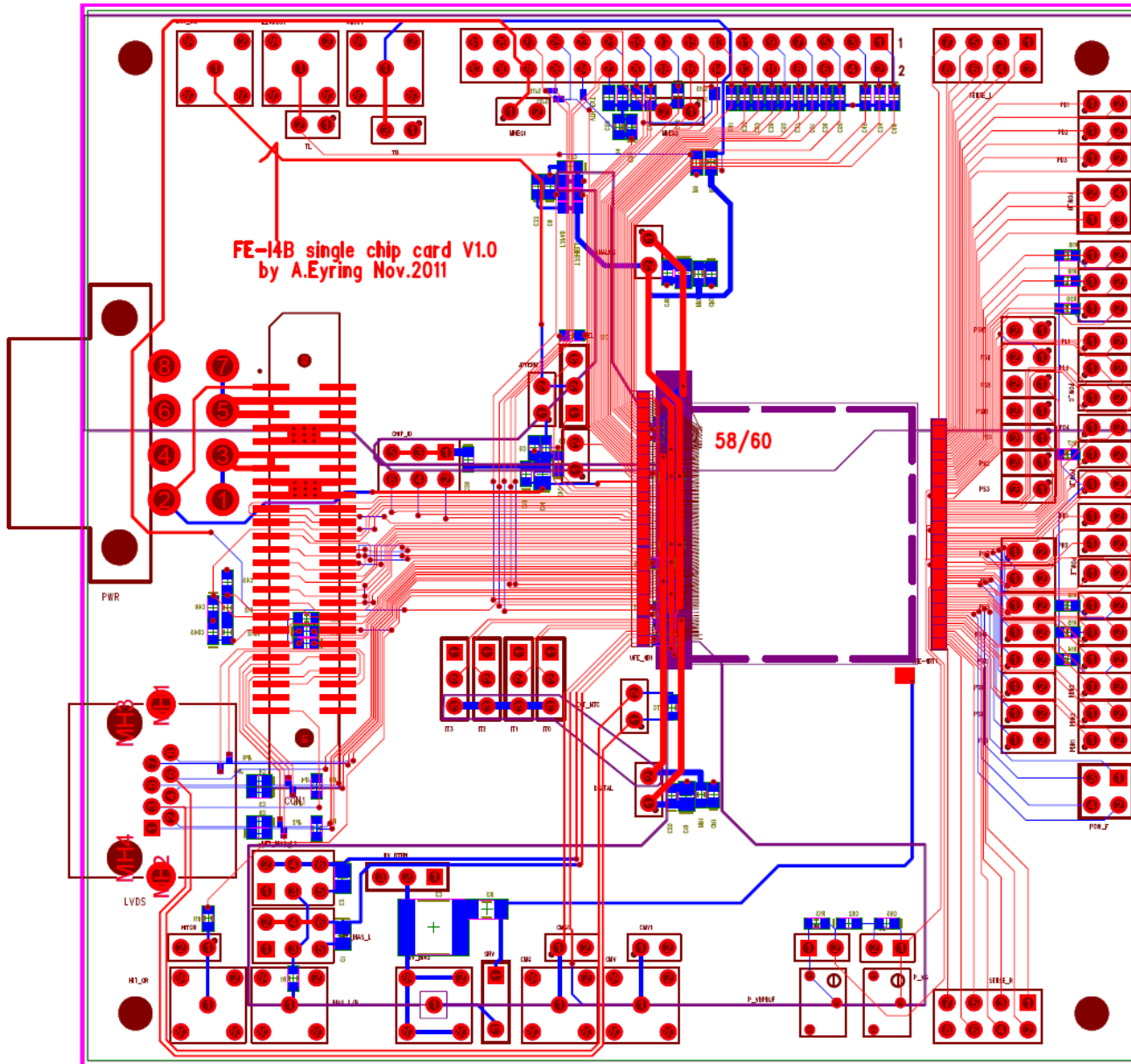


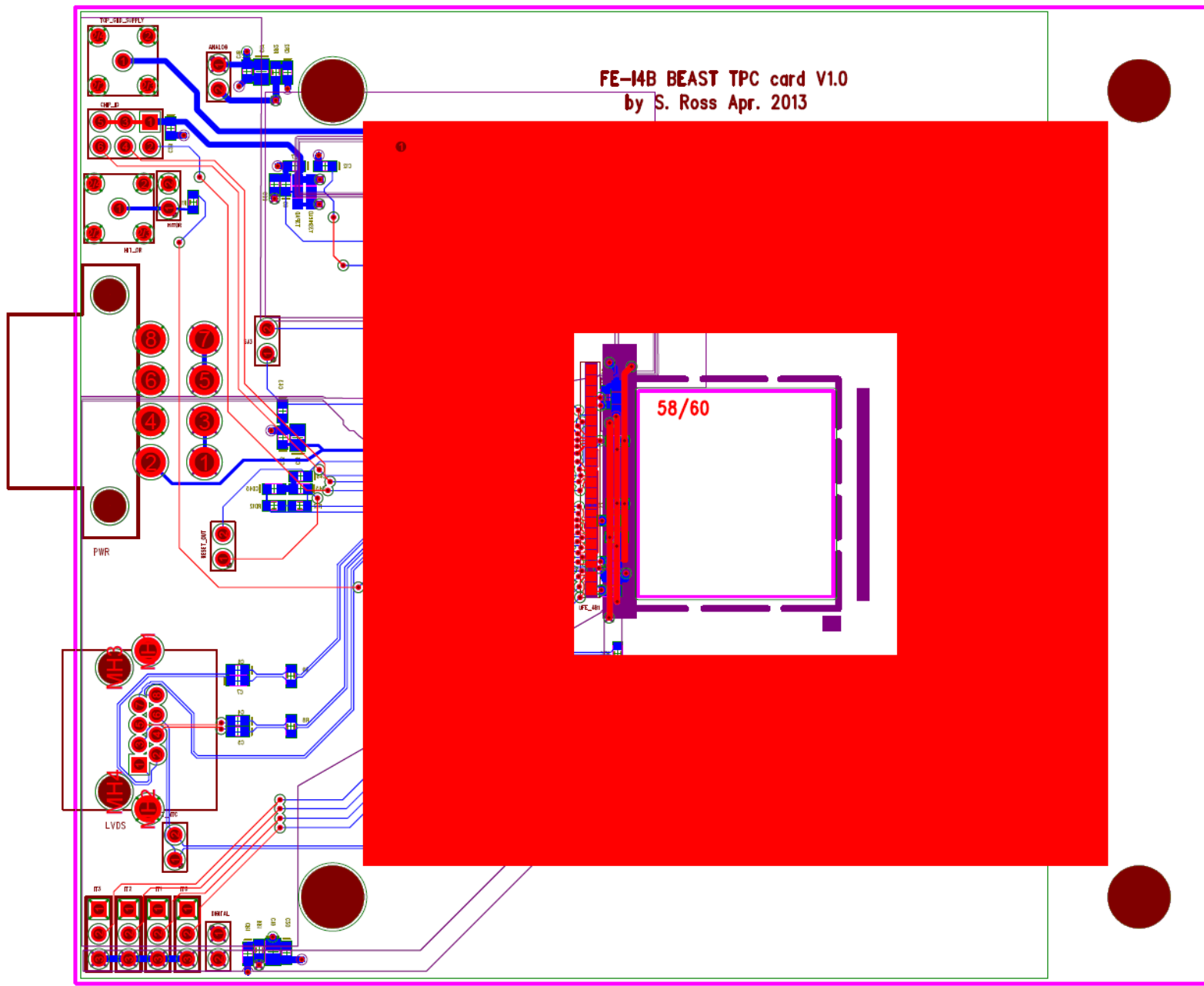
# FE-I4b single chip card from University of Bonn



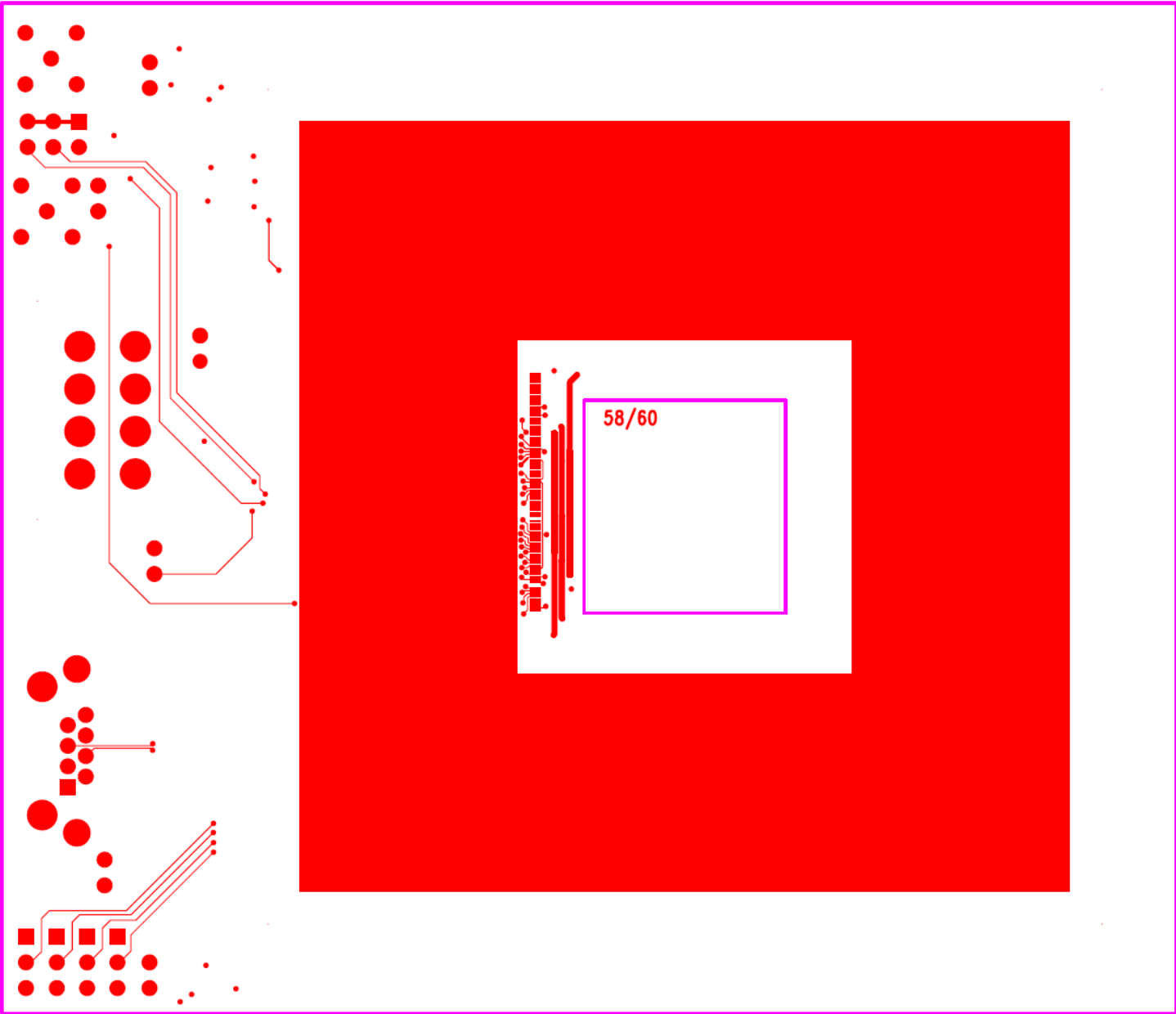
Desired changes:

- Center chip between mounting holes (3.25" spacing)
- Eliminate unnecessary connections and components
- Move all through-hole components to edge outside mounting holes
- Move all SMD components to bottom side of board
- Reroute traces to bottom side
- Add grounded copper plane
- Add board cut-out around FE-I4b so chip can be mounted flush with board

# BEAST TPC card adapted from Bonn board (composite)



# BEAST TPC card top



# BEAST TPC card bottom

