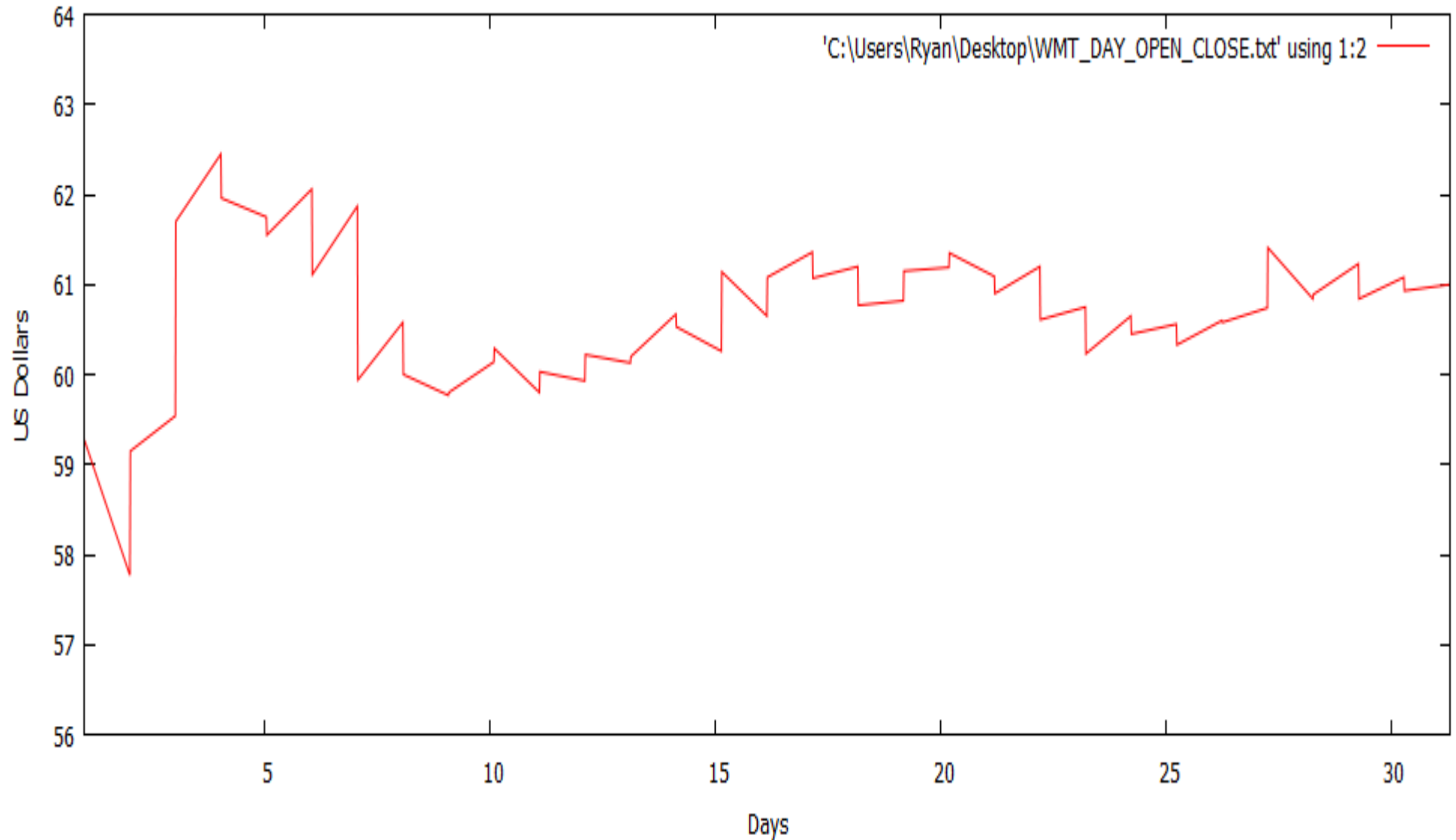


# Symbol: WMT

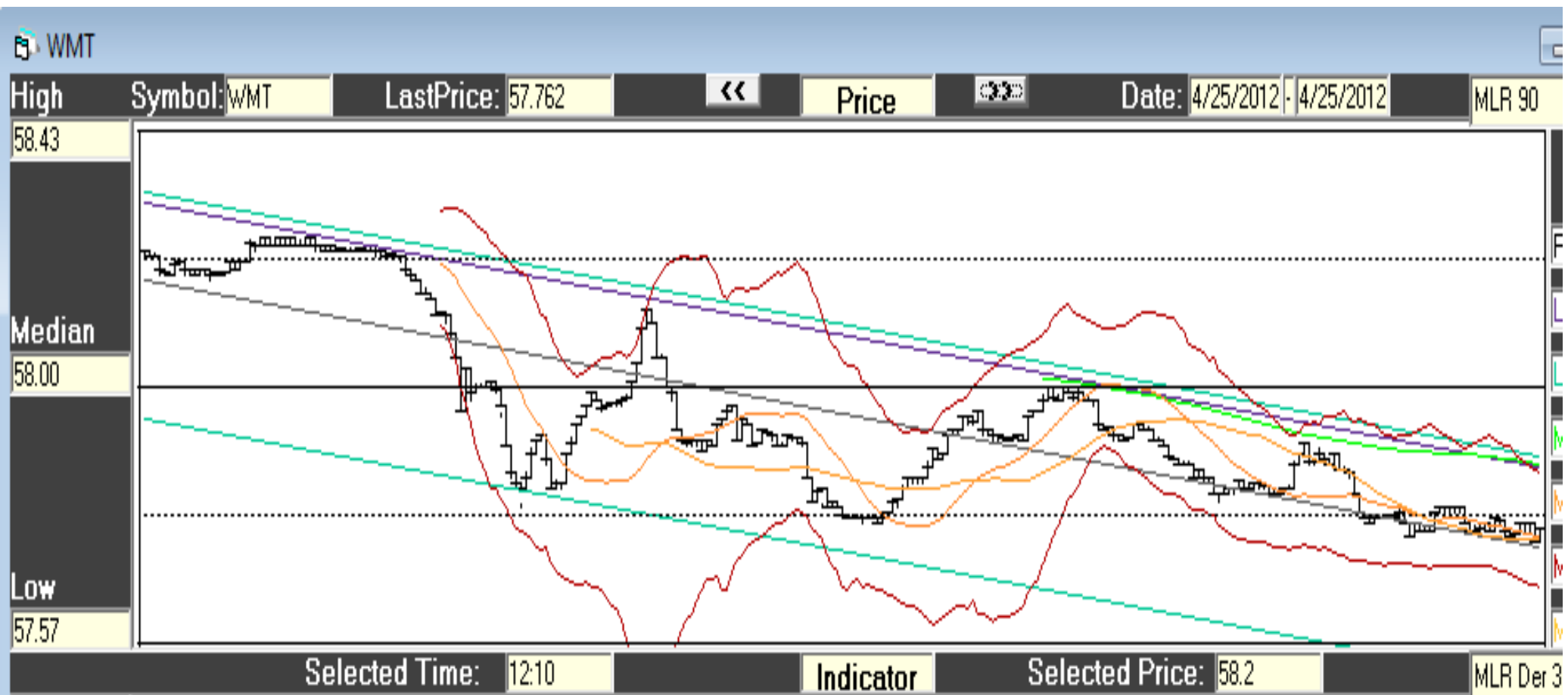


# How well does connecting the dots work?



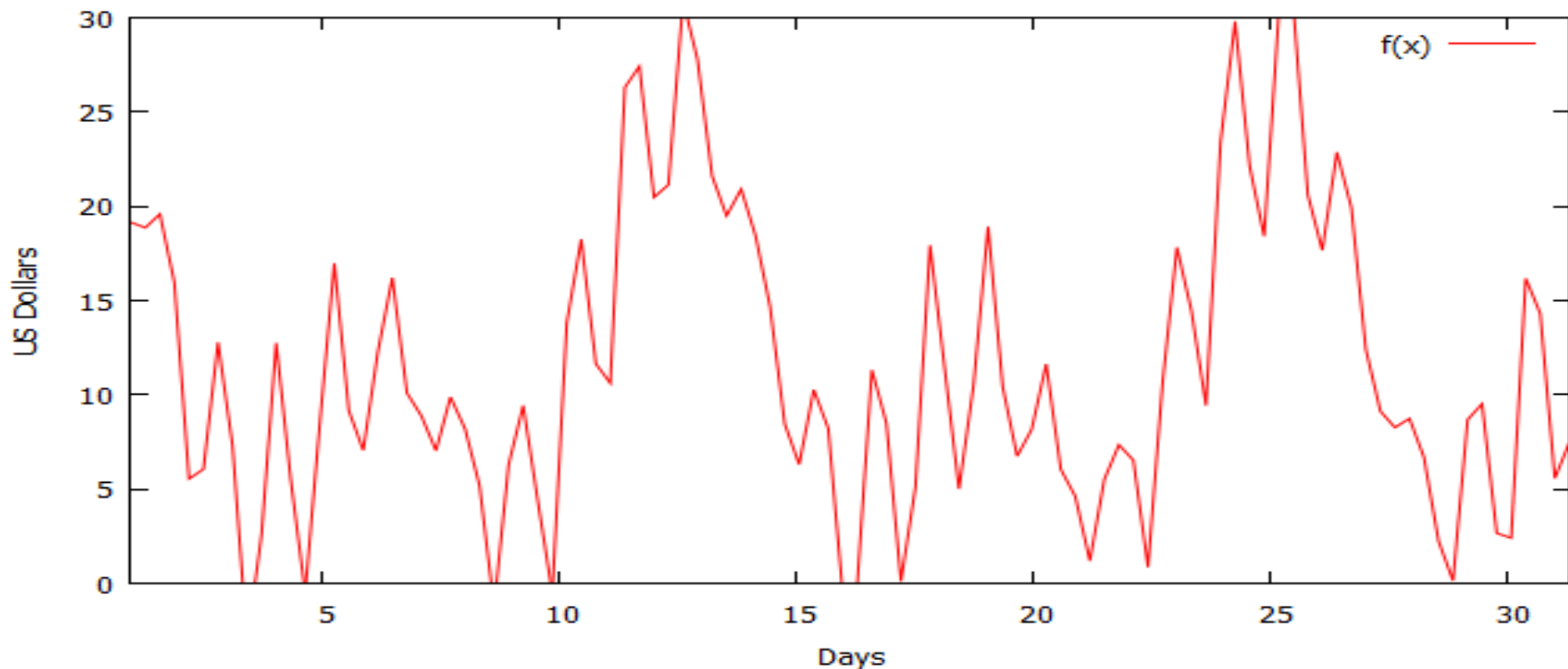
If we take a look at an even smaller time-window we  
could see something like this

- The connected lines from the previous figure could be anywhere between the blue lines on this figure
- Time duration of 90 minutes
- Actual prices plotted in black



So if we take what we've seen so far we  
might say there's a pattern

Long term fluctuations → Mid term fluctuations  
→ Short term fluctuations → even smaller  
fluctuations ?



# My approach:

$$Y_{year} = \frac{(P_{(yn+1)} - P_{yn})}{(1 \text{ year})} * dt * i + P_0$$