



A BASIC GRAPHIC EQUALIZER

Marvin Schwickert

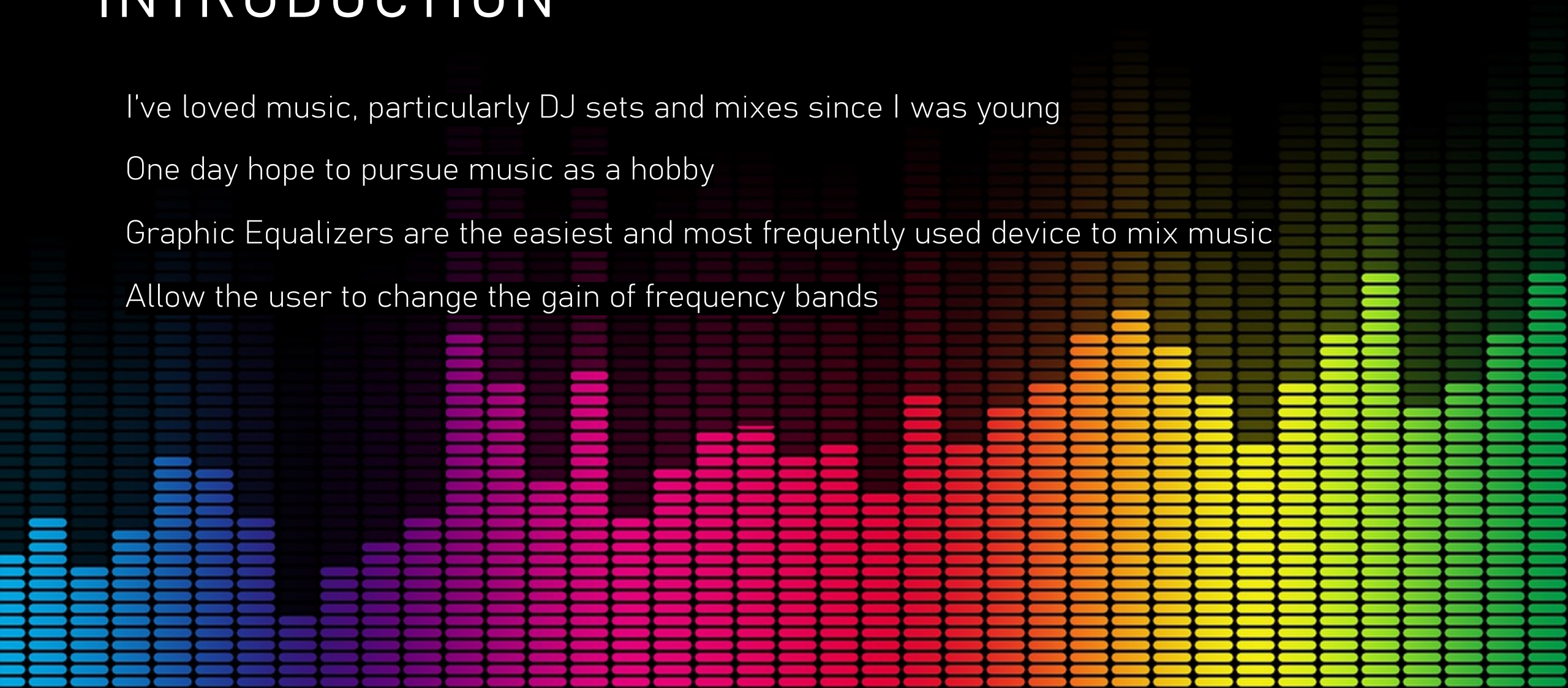
INTRODUCTION

I've loved music, particularly DJ sets and mixes since I was young

One day hope to pursue music as a hobby

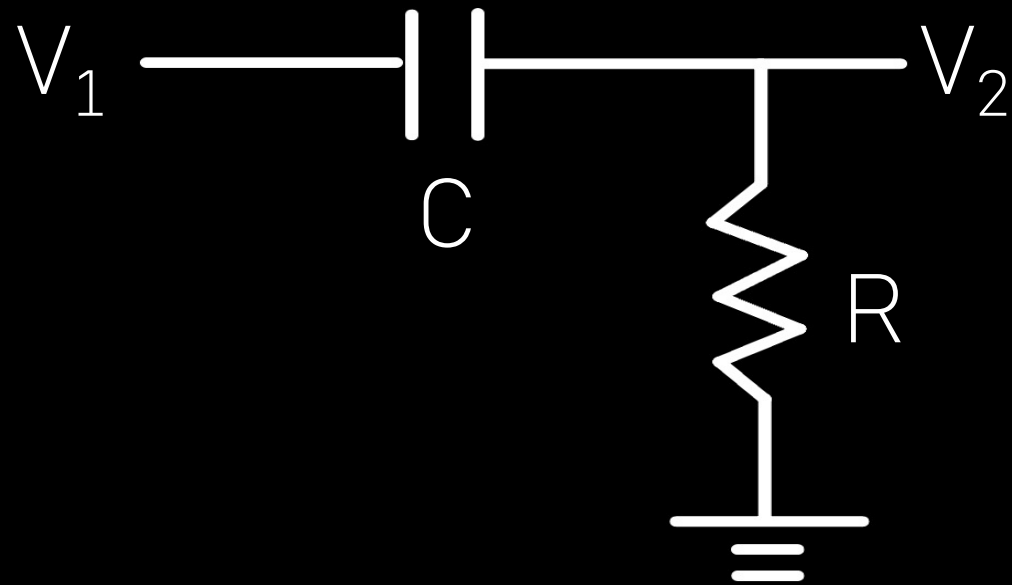
Graphic Equalizers are the easiest and most frequently used device to mix music

Allow the user to change the gain of frequency bands

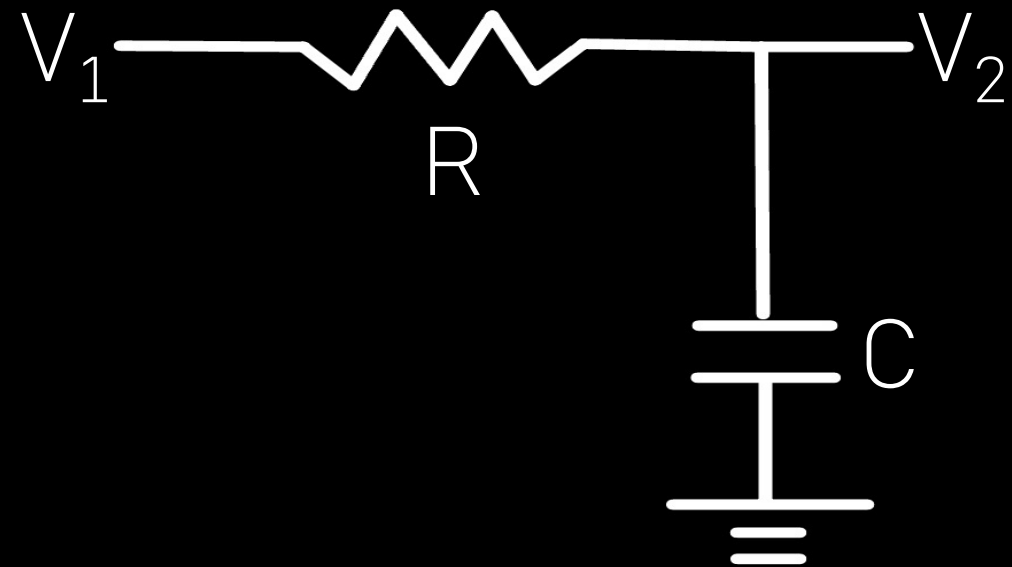


BASIC BUILDING BLOCKS

High Pass Filter



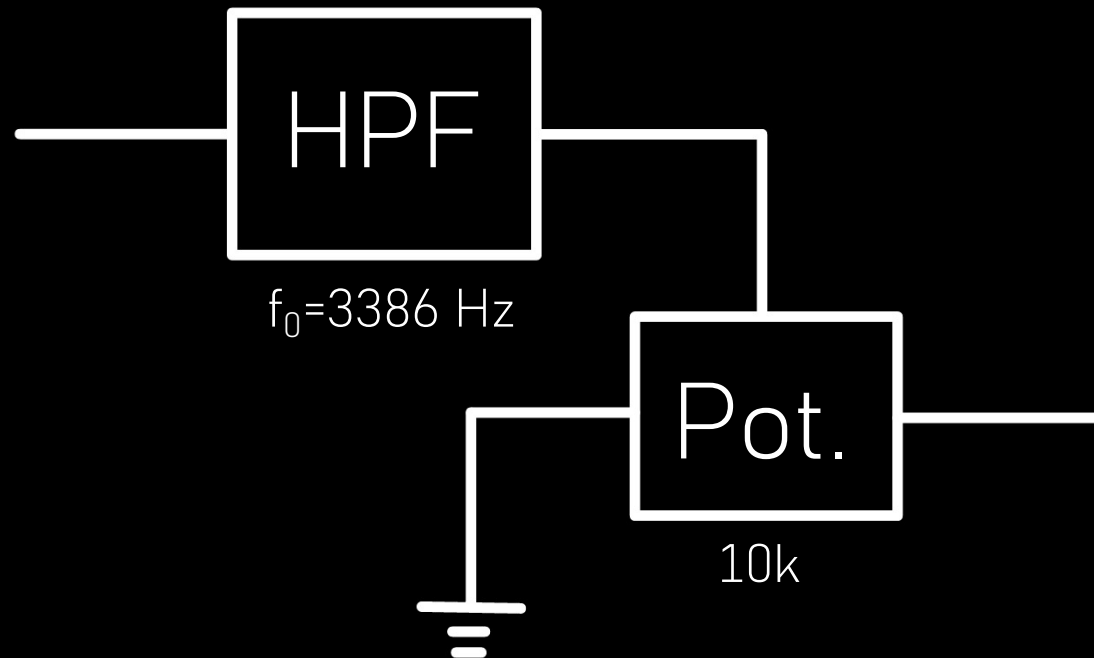
Low Pass Filter



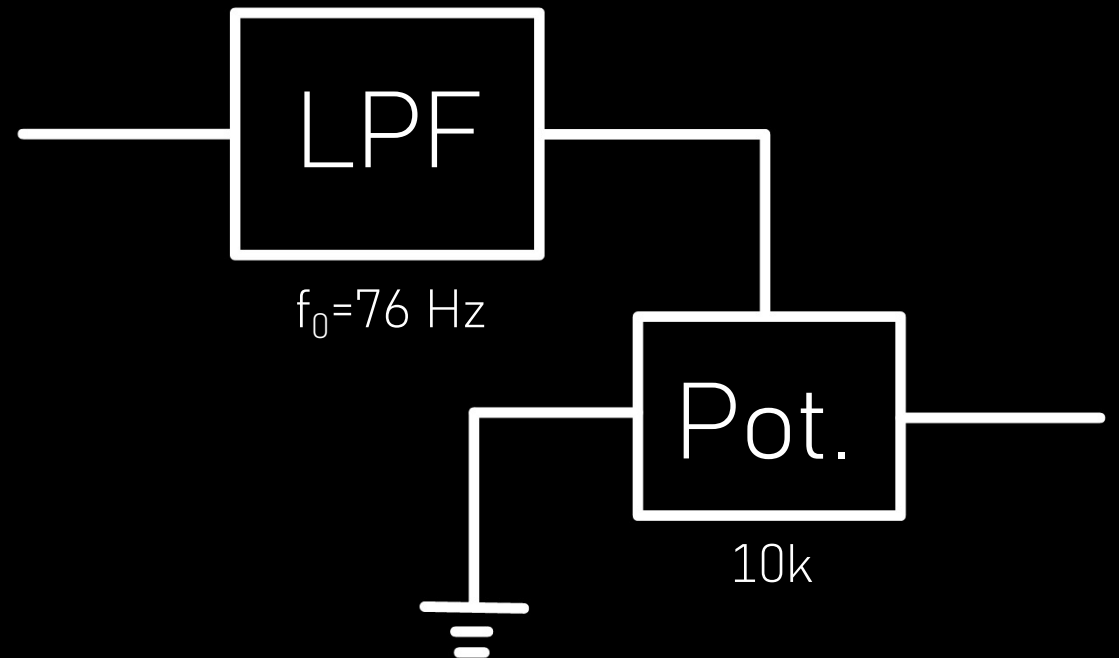
$$f_0 = \frac{1}{2\pi RC}$$

FILTER SCHEMATICS

Treble Adjustor

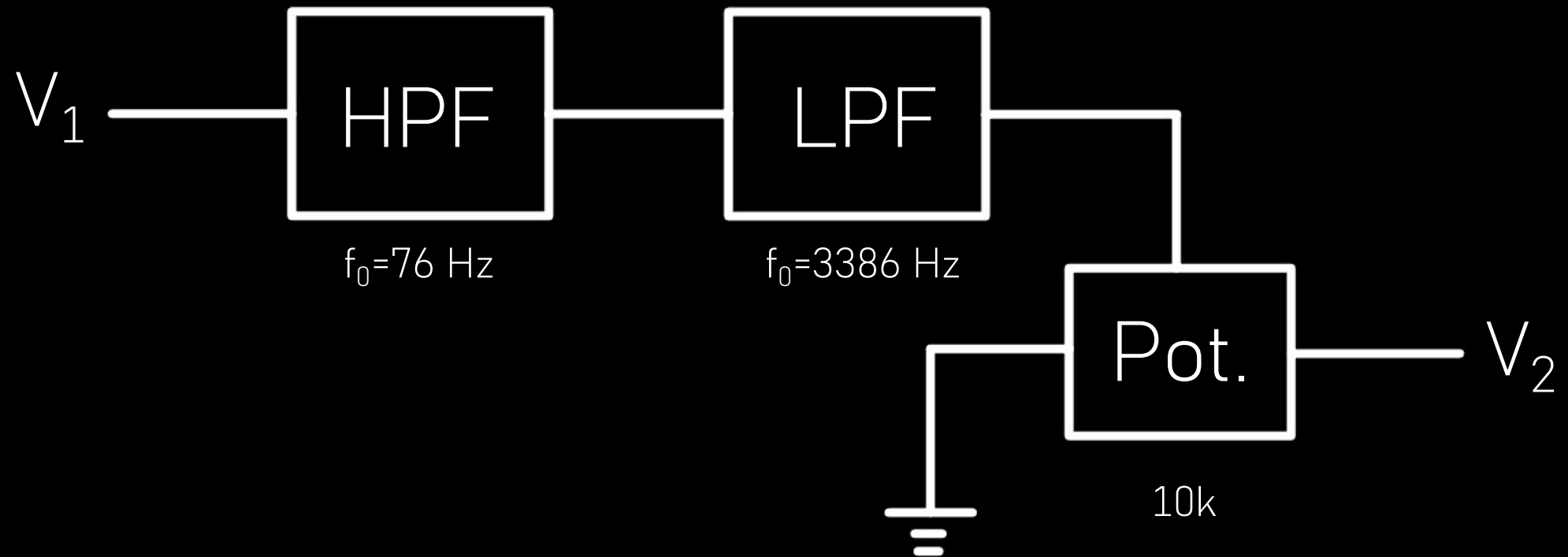


Bass Adjustor



FILTER SCHEMATICS

Band Pass Adjustor



COMPLETE BLOCK DIAGRAM



