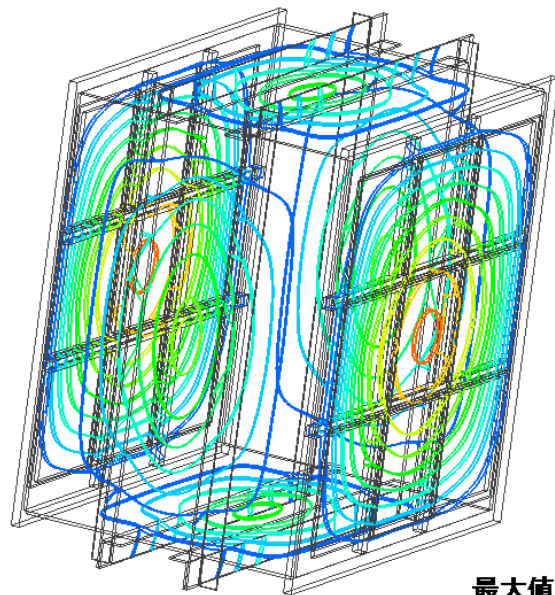


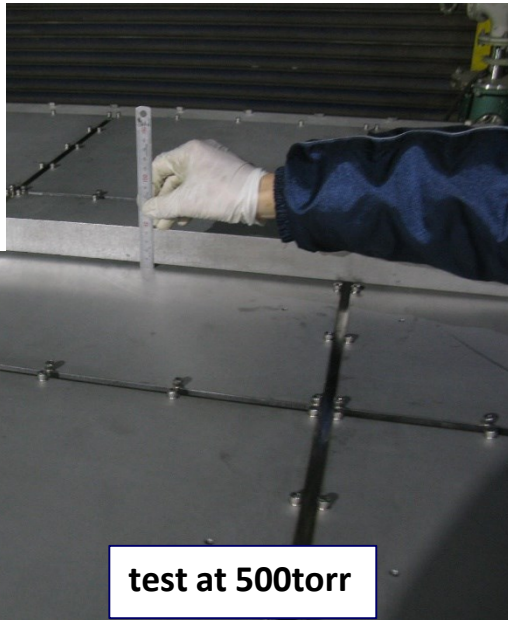
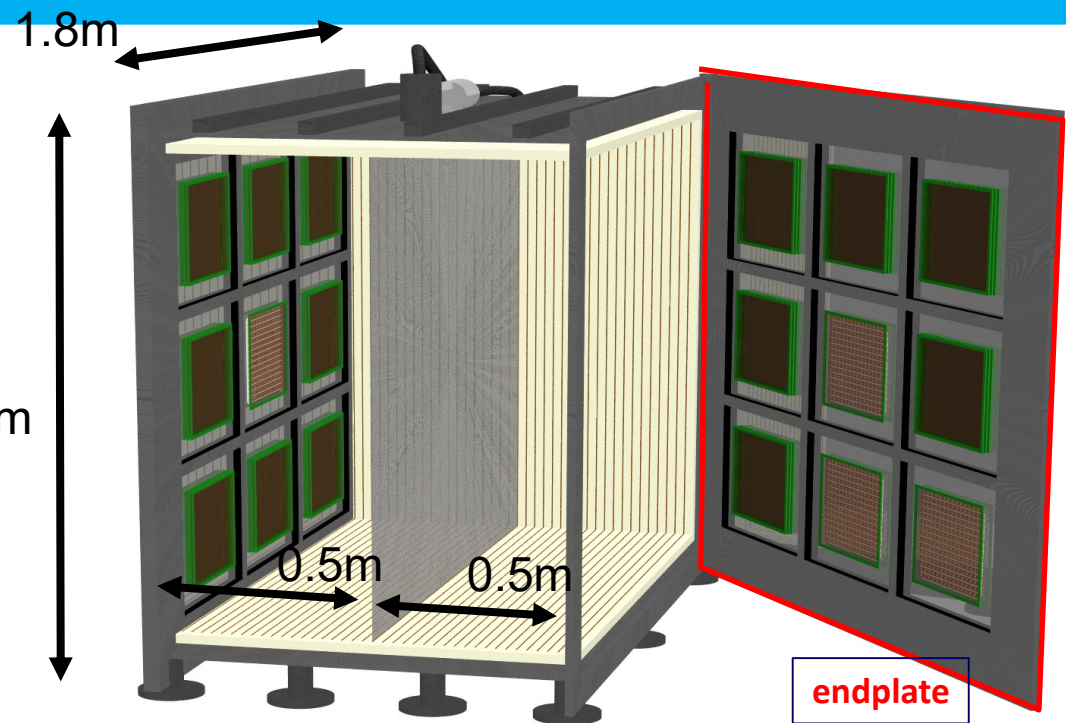
## Kobe SF6 activities

- CYGNUS+NEWAGE vessel status
  - made,
  - endplate was deformed ( $\times 4$  larger than expected)
  - re-designing the endplate...
  - cause: the number of fixing bolts may not be enough.

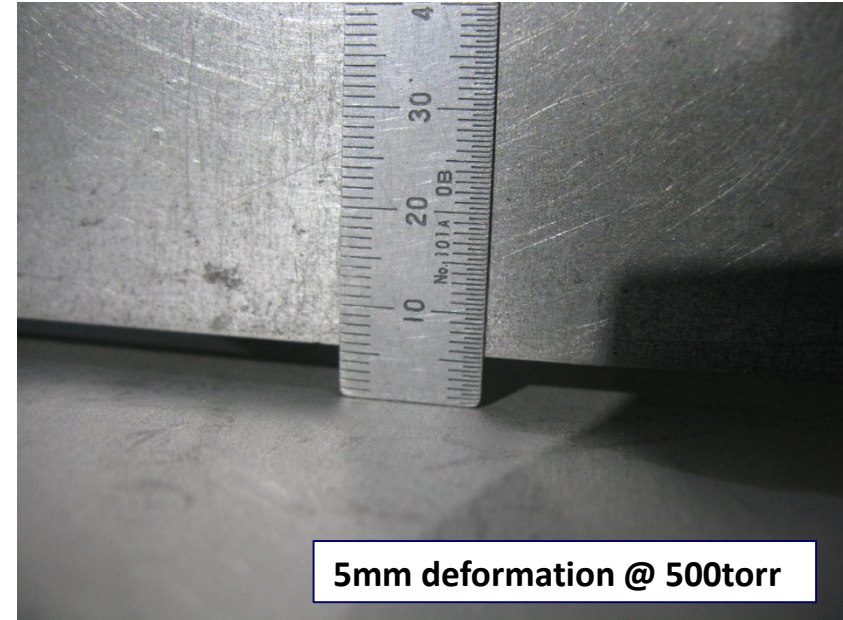


最大値 : 3.705  
最小値 : 0.001

simulation (FEM)  
@0torr



test at 500torr



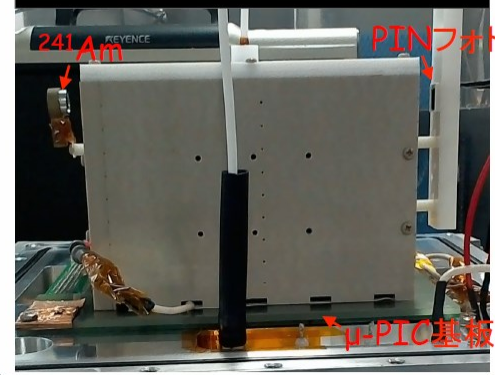
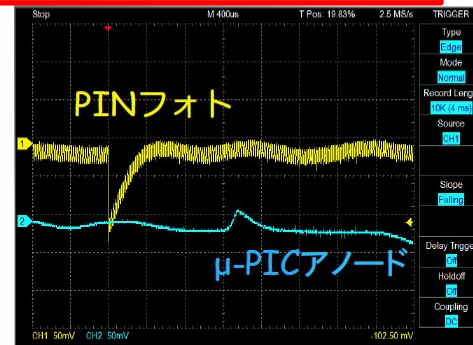
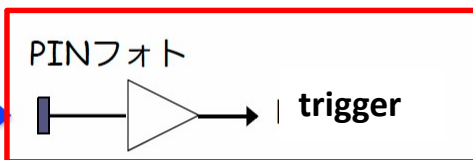
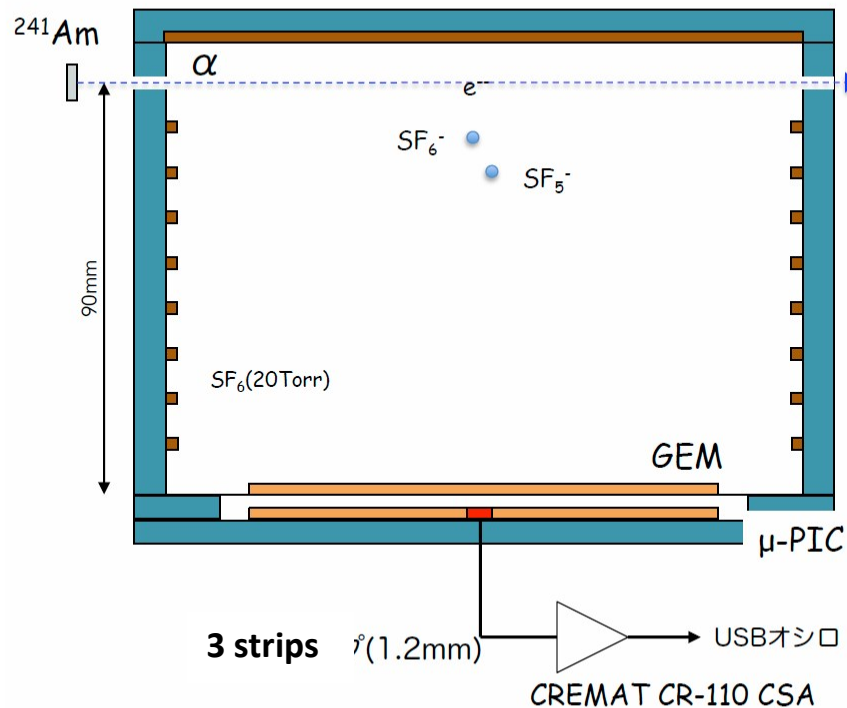
5mm deformation @ 500torr

- SF6 status (Tomonri Ikeda @ JPS)
  - GEM+  $\mu$  PIC system with SF6 20torr
  - in 2016 3D tracking : done
  - 2017 Mar: minority peak observation + fidutialization with single channel: done  $\Leftarrow$  today
  - by CYGNUS meeting: minority peak + fidutialization + 3D tracking

- Minority peak observation + fidutialization

T. Ikeda  
2017 Mar JPS meeting

## setup



- gas gain  $\sim 2000$

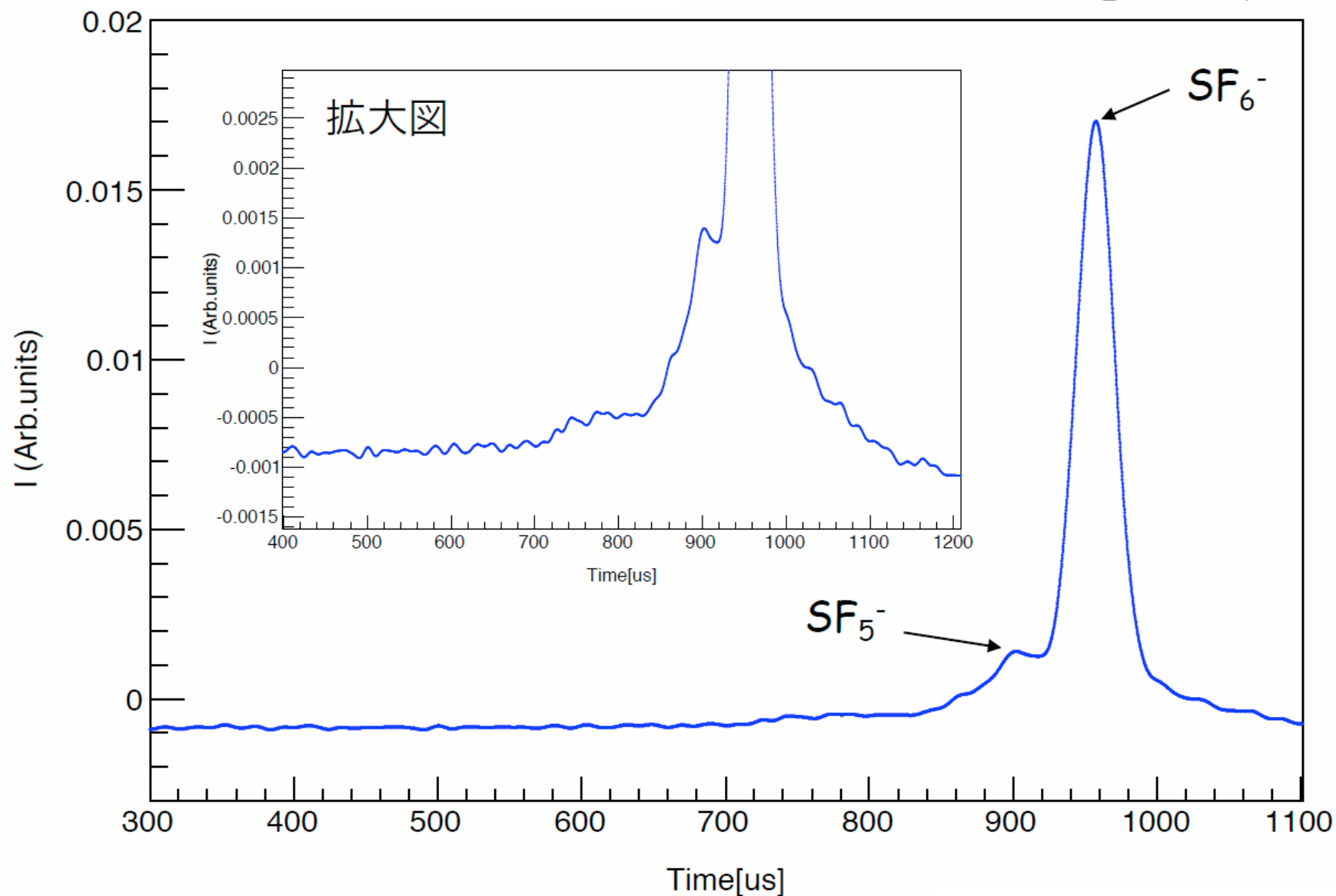


# minority charge detection



- 100 events averaged waveform

$E=550\text{V/cm}$



- future gas meetings proposal
  - May 17th (Wed) 9pm GMT
  - June 7th (Wed) 9pm GMT