

# EKLM status

Petr Katrenko, LPI

# EKLM progress

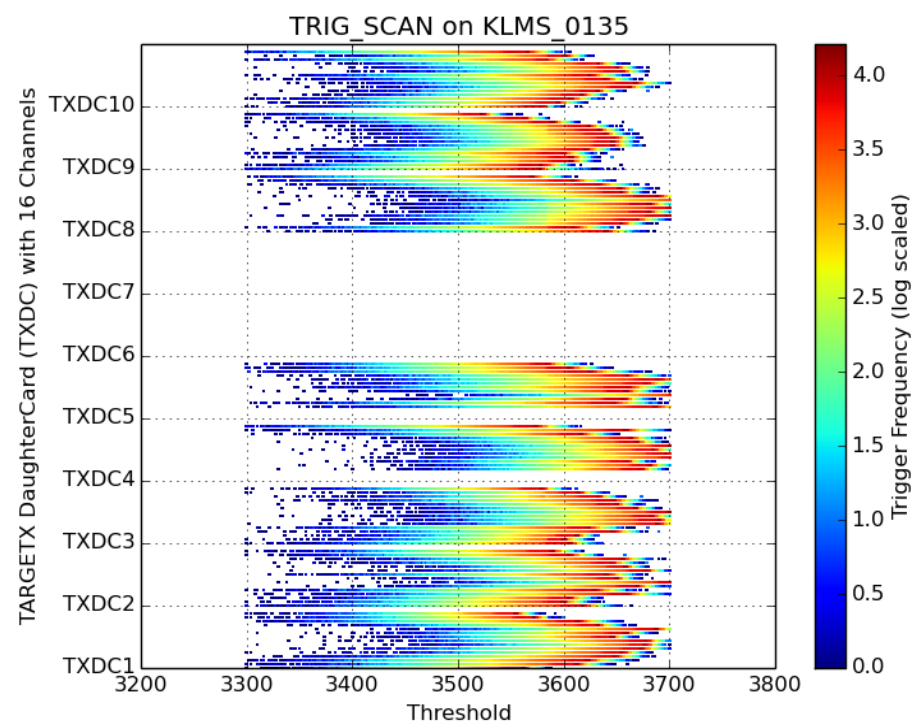
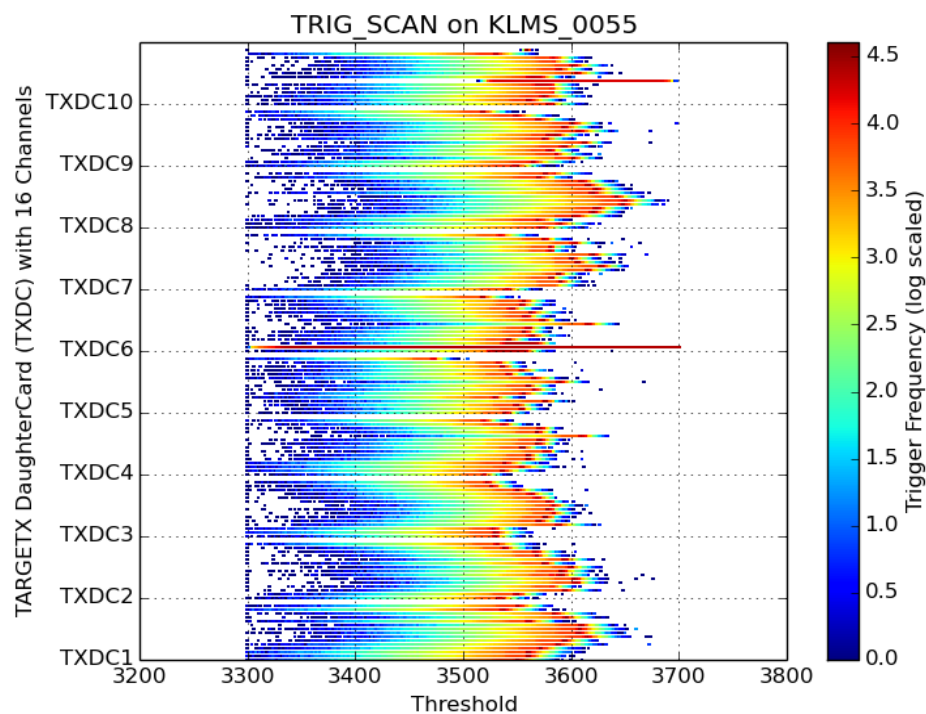
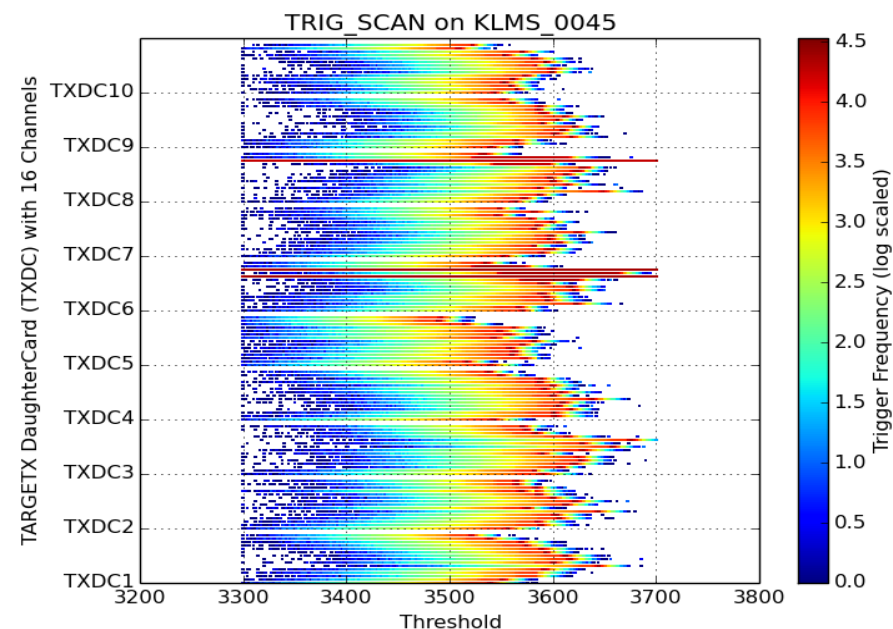
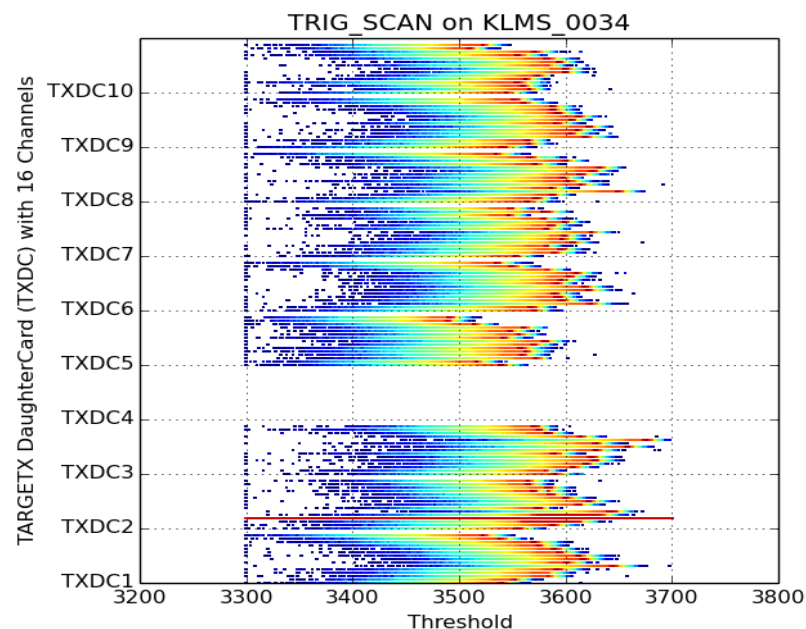
- We had 19 boards with broken transformers, capacitors or transformers
- 12 boards was successfully repaired and installed into backward + 1 broken board in the outer layer on E-Hut side, since it will not be available after the end of September.
- We had to take capacitors from one of the broken board.

# List of the broken boards

Board number	Status
45	3 bad channell
55	2 bad channell
132	1 bad channell
143	1 bad channell
147	1 bad channell
34	Broken TXDC(15 channels) + 1 bad channells. <b>To be used as spare</b>
135	2 broken TXDC + 4 bad channells. Capacitors was removed from broken TXDC in order to repair the other board. <b>To be used as spare</b>

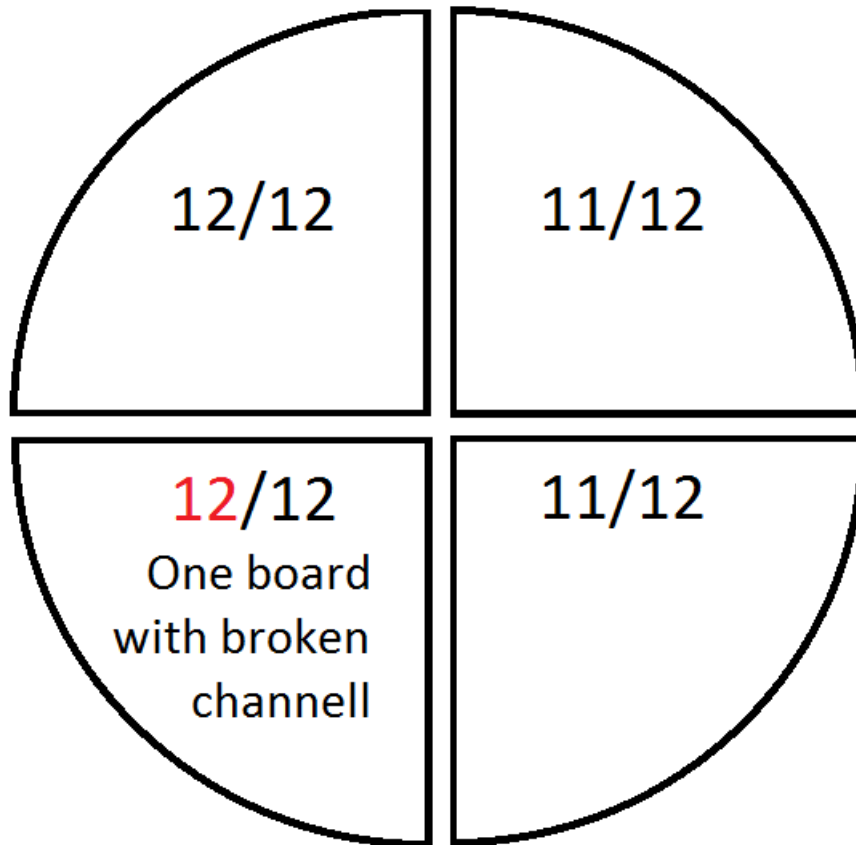
No obvious mechanical problem, e.g. broken pins, transformers or capciors, is observed on this boards.

# List of the broken boards



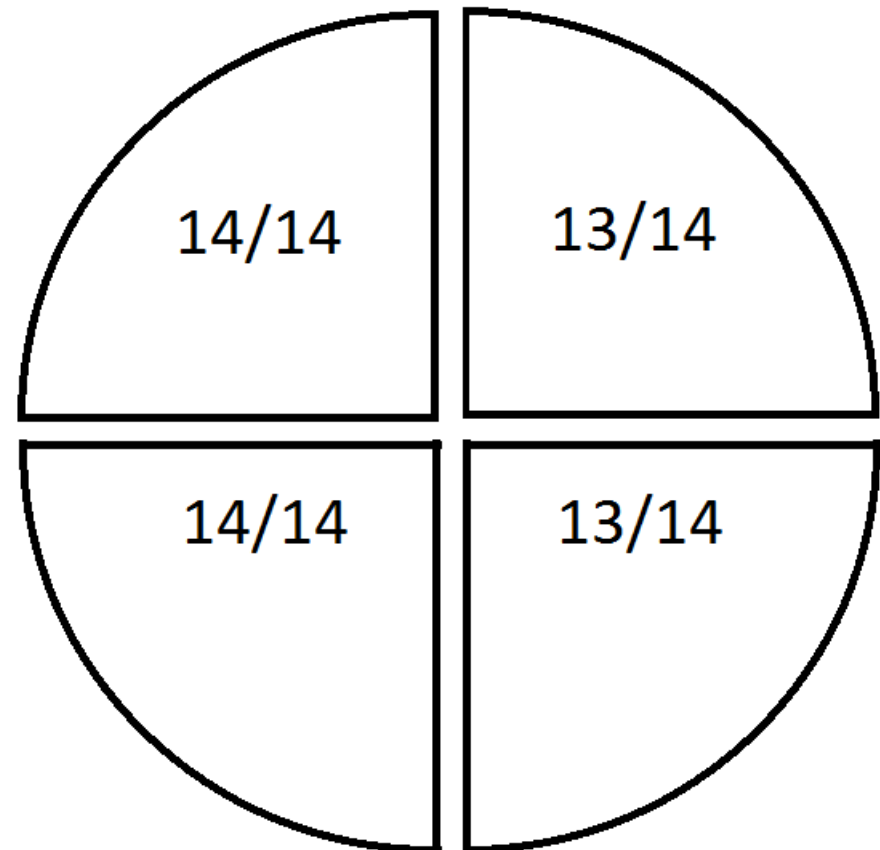
# Number of installed boards in EKLM

**Backward:**



E-Hut side

**Forward:**



# Plan

- Outer layers of EKLM accelerator side are not filled yet. I plan to finish it this week
- Connect everything to data concentrators, HV crates and so on

# Questions

- Is it possible to move daughter cards from one motherboard to another. It may repair 4/5 broken boards.
- Is it possible to repair boards with broken TXDC at Hawai?